

THE  
LANSDOWN  
3 bedroom home



AUGUSTUS  
GRANGE

Haverfordwest

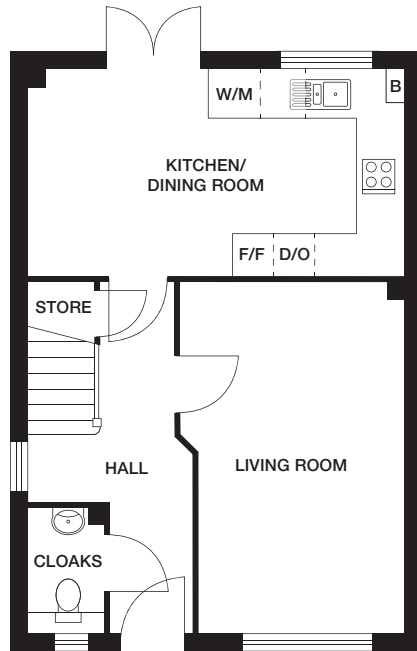


# THE LANSDOWN

## 3 bedroom home

Plots 9, 12, 14, 17, 18, 19, 20, 27, 37, 43, 67\*, 69, 70, 85, 95\*, 98\* and 115

↕ 898 ft<sup>2</sup>

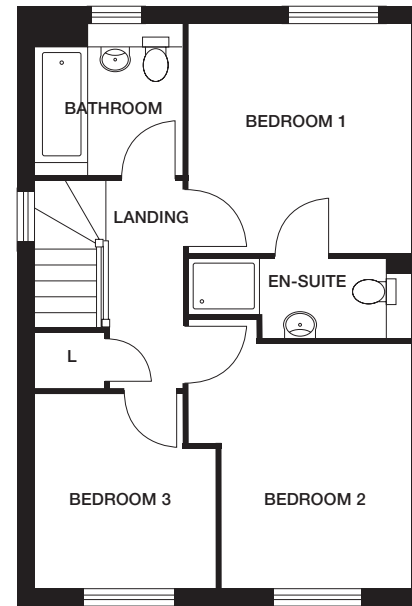


GROUND FLOOR

**Kitchen/Dining Room** 5298mm x 2912mm (max) 17'4" x 9'6" (max)

**Living Room** 3186mm x 5023mm (max) 10'5" x 16'5" (max)

**Cloaks** 950mm x 1800mm (max) 3'1" x 5'10" (max)



FIRST FLOOR

**Bedroom 1** 3125mm x 3221mm 10'3" x 10'7"

**En-Suite** 3125mm x 1151mm (max) 10'3" x 3'9" (max)

**Bedroom 2** 2660mm x 3500mm 8'8" x 11'5"

**Bedroom 3** 2575mm x 2778mm (max) 8'5" x 9'1" (max)

**Bathroom** 2110mm x 2010mm (max) 6'11" x 6'7" (max)

\* Homes available with Shared Ownership, selling on behalf of Pobl.

Dimensions stated are within 50mm (2") but should not be used as a basis for furnishings, furniture or appliance spaces etc. Dimensions for such purposes must be verified against actual site measurements. Please note the handing of plots may vary from the floor plans shown. Please check individual plot details with our sales team.

**LOVELL  
HOMES**