

THE
LAMBOURNE
3 bedroom home



AUGUSTUS
GRANGE

Haverfordwest

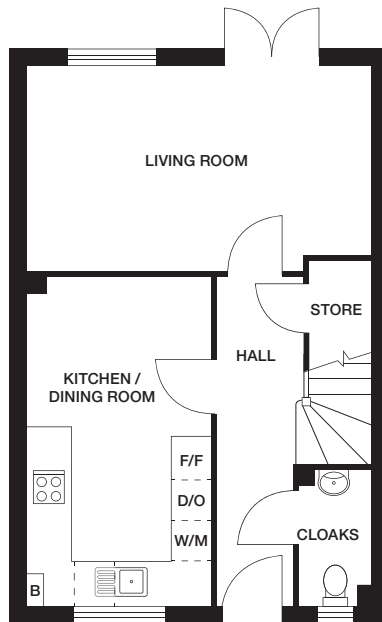


THE LAMBOURNE

3 bedroom home

Plots 1*, 2*, 3*, 4*, 5*, 6*, 7*, 8, 10, 11, 13, 15, 16, 21, 22*, 23*, 24, 25, 26*, 29*, 30*, 31, 33, 34, 35, 36, 38*, 39*, 40*, 41, 66*, 71, 72*, 87*, 88*, 91*, 92*, 93*, 94*, 96*, 97*, 99*, 100*, 101*, 112* and 113*

↕ 859 ft²

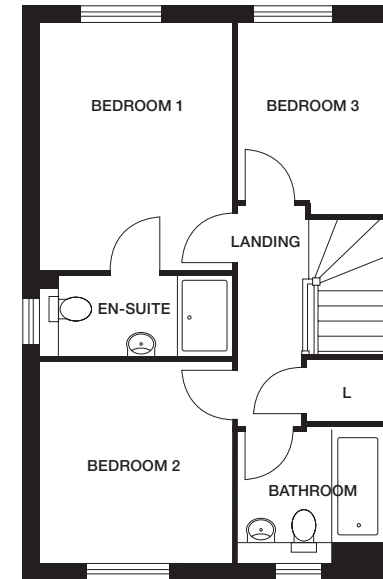


GROUND FLOOR

Kitchen/Dining Room 2688mm x 4885mm (max) 8'10" x 16'0" (max)

Living Room 5073mm x 3050mm (max) 16'7" x 10'0" (max)

Cloaks 1072mm x 2010mm (max) 3'6" x 6'7" (max)



FIRST FLOOR

Bedroom 1 2863mm x 3647mm 9'4" x 11'11"

En-Suite 2863mm x 1230mm (max) 9'4" x 4'0" (max)

Bedroom 2 2863mm x 2995mm 9'4" x 9'10"

Bedroom 3 2147mm x 2804mm (max) 7'0" x 9'2" (max)

Bathroom 2147mm x 2010mm (max) 7'0" x 6'7" (max)

* Homes available with Shared Ownership, selling on behalf of Pobl.

Dimensions stated are within 50mm (2") but should not be used as a basis for furnishings, furniture or appliance spaces etc. Dimensions for such purposes must be verified against actual site measurements. Please note the handing of plots may vary from the floor plans shown. Please check individual plot details with our sales team.

**LOVELL
HOMES**