

THE  
GAINSBOROUGH  
2 bedroom home



AUGUSTUS  
GRANGE

Haverfordwest



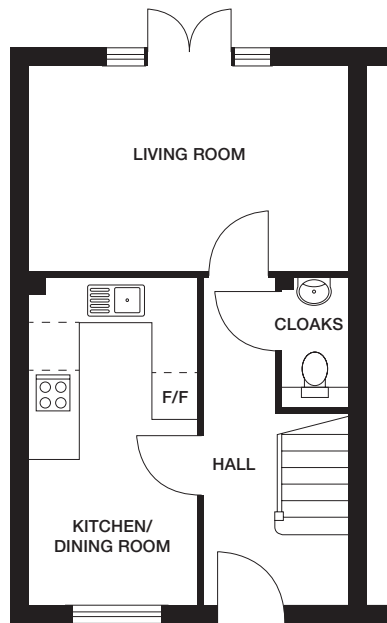


# THE GAINSBOROUGH

## 2 bedroom home

Plots 44\*, 45\*, 89\* and 90\*

↕ 663 ft<sup>2</sup>

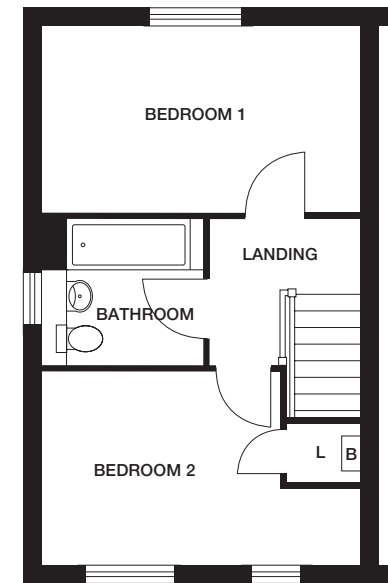


GROUND FLOOR

**Kitchen/Dining Room** 2260mm x 4459mm (max) 7'5" x 14'7" (max)

**Living Room** 4285mm x 2800mm 14'0" x 9'2"

**Cloaks** 897mm x 1800mm (max) 2'11" x 5'10" (max)



FIRST FLOOR

**Bedroom 1** 4285mm x 2540mm 14'0" x 8'4"

**Bedroom 2** 4285mm x 2627mm 14'0" x 8'7"

**Bathroom** 2010mm x 2030mm (max) 6'7" x 6'7" (max)

\* Homes available with Shared Ownership, selling on behalf of Pobl.

Dimensions stated are within 50mm (2") but should not be used as a basis for furnishings, furniture or appliance spaces etc. Dimensions for such purposes must be verified against actual site measurements. Please note the handing of plots may vary from the floor plans shown. Please check individual plot details with our sales team.

**LOVELL  
HOMES**