

The Lloyd

3 Bedroom Home | Plot: 21 | 91m² / 1011ft²

BRYN TIRION

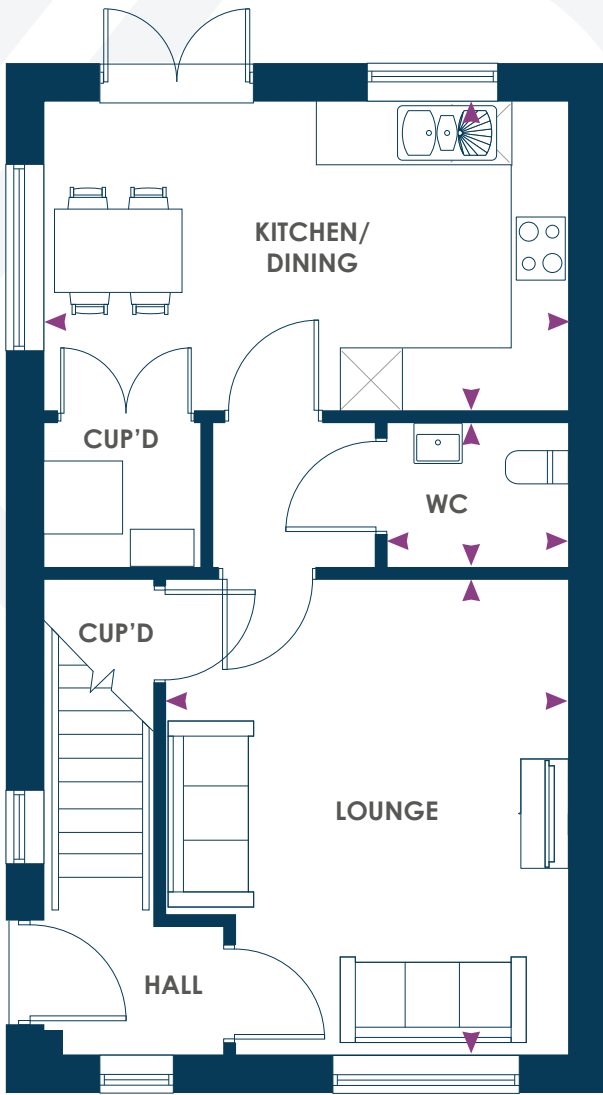
LLANGAIN



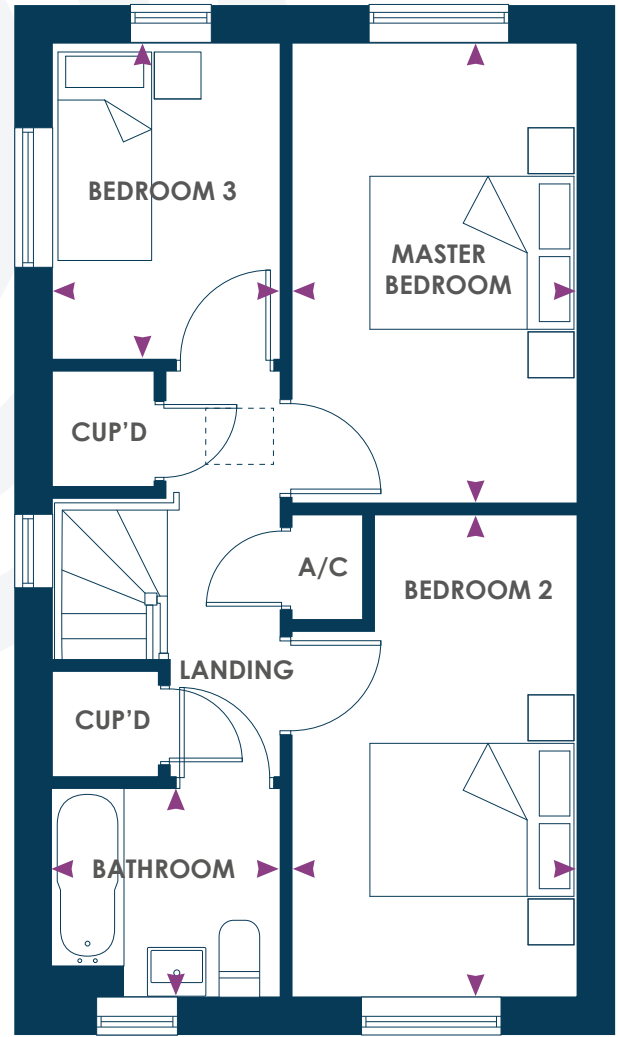
CONSUMER CODE FOR HOME BUILDERS
www.consumercode.co.uk

tsi
APPROVED CODE
TRADINGSTANDARDS.UK

poblliving
bryntirion@poblliving.co.uk
www.poblliving.co.uk



GROUND FLOOR



FIRST FLOOR

The Lloyd

3 Bedroom Home

Plot: 21

91m² / 1011ft²

GROUND FLOOR

Kitchen/Dining

5.07m x 2.97m 16'7'' x 9'8''

Lounge

3.99m* x 4.59m* 13'1'' x 15'0''

WC

1.80m x 1.40m 5'10'' x 4'7''

FIRST FLOOR

Master Bedroom

2.75m x 4.45m 9'0'' x 14'7''

Bedroom 2

2.75m* x 4.63m* 9'0'' x 15'2''

Bedroom 3

2.20m x 3.06m 7'2'' x 10'0''

Bathroom

2.20m x 2.00m 7'2'' x 6'6''