

The Letchworth

3 Bedroom Home | Plots: 9 & 16 | 81m² / 874ft²

BRYN ONNEN

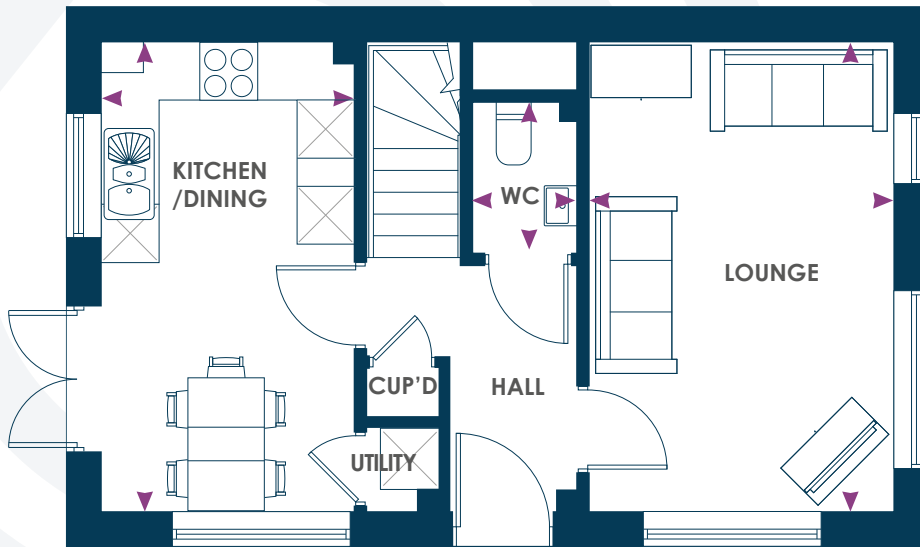
CLYDACH



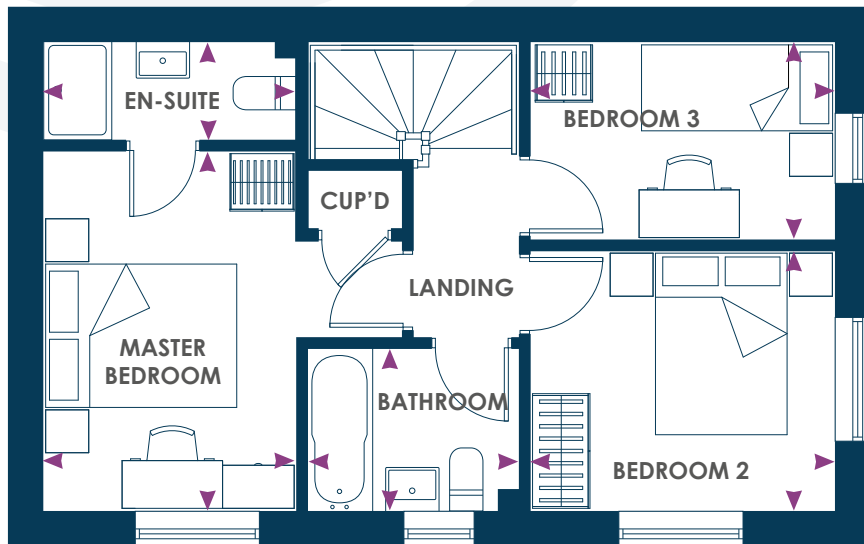
CONSUMER CODE FOR HOME BUILDERS
www.consumercode.co.uk


APPROVED CODE
TRADINGSTANDARDS.UK

poblliving
brynonnen@poblliving.co.uk
www.poblliving.co.uk



GROUND FLOOR



FIRST FLOOR

The Letchworth

3 Bedroom Home

Plots: 9 & 16

81m² / 874sqft²

GROUND FLOOR

Kitchen/Dining

4.88m x 2.64m 16'0'' x 8'6''

Lounge

4.88m x 3.18m 16'0'' x 10'4''

WC

1.60m x 1.11m 5'3'' x 3'6''

FIRST FLOOR

Master Bedroom

3.74m x 2.64m 12'3'' x 8'6''

En-suite

1.03m x 2.64m 3'4'' x 8'6''

Bedroom 2

2.70m x 3.18m 8'9'' x 10'4''

Bedroom 3

2.07m x 3.18m 6'8'' x 10'4''

Bathroom

1.70m x 2.22m 5'6'' x 7'3''