

The Hyde Variation

4 Bedroom Home | Plot: 60 | 123m² / 1,323ft²

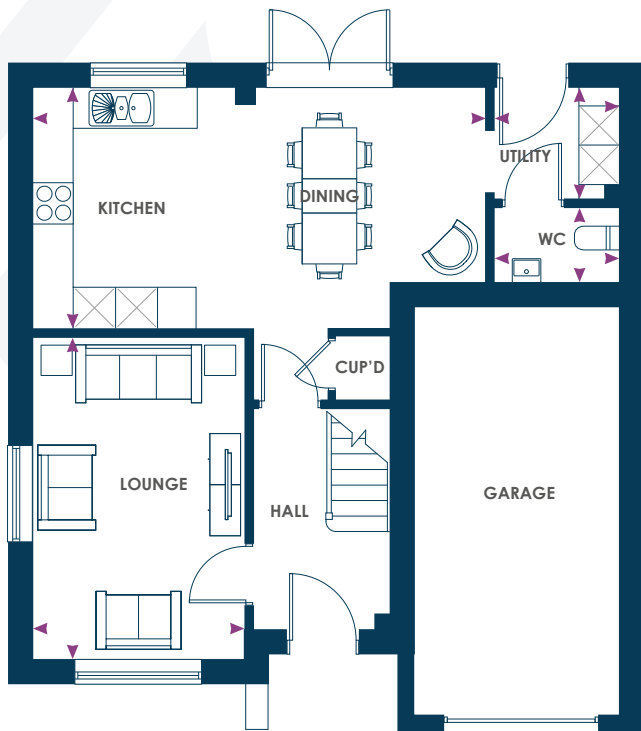
BRYN ONNEN

CLYDACH

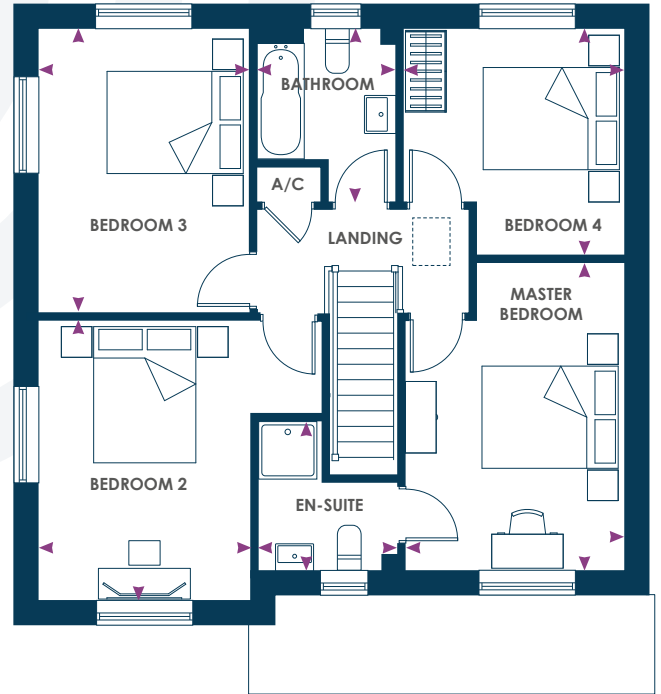


poblliving
brynonnen@poblliving.co.uk
www.poblliving.co.uk

CGIs are indicative only and are subject to change, elevations and external finishes may vary.



GROUND FLOOR



FIRST FLOOR

The Hyde Variation

4 Bedroom Home

Plot: 60

123m² / 1,323sqft²

GROUND FLOOR

Kitchen/Dining

6.64m* x 3.50m* 21'8'' x 11'5''

Lounge

3.11m x 4.76m 10'2'' x 15'6''

Utility

1.84m x 1.63m 6'0'' x 5'3''

WC

1.84m x 1.15m 6'0'' x 3'8''

Garage

3.08m x 5.90m 10'1'' x 19'4''

FIRST FLOOR

Master Bedroom

3.21m x 4.61m* 10'5'' x 15'1''

En-suite

2.07m* x 2.17m* 6'8'' x 7'1''

Bedroom 2

3.08m* x 4.10m* 10'1'' x 13'5''

Bedroom 3

3.08m x 4.15m 10'1'' x 13'6''

Bedroom 4

3.25m* x 3.25m* 10'7'' x 10'7''

Bathroom

2.04m* x 2.48m* 6'7'' x 8'1''