

# The Hampstead

4 Bedroom Home | Plots: 15 & 43 | 108m<sup>2</sup> / 1163ft<sup>2</sup>

# BRYN ONNEN

CLYDACH

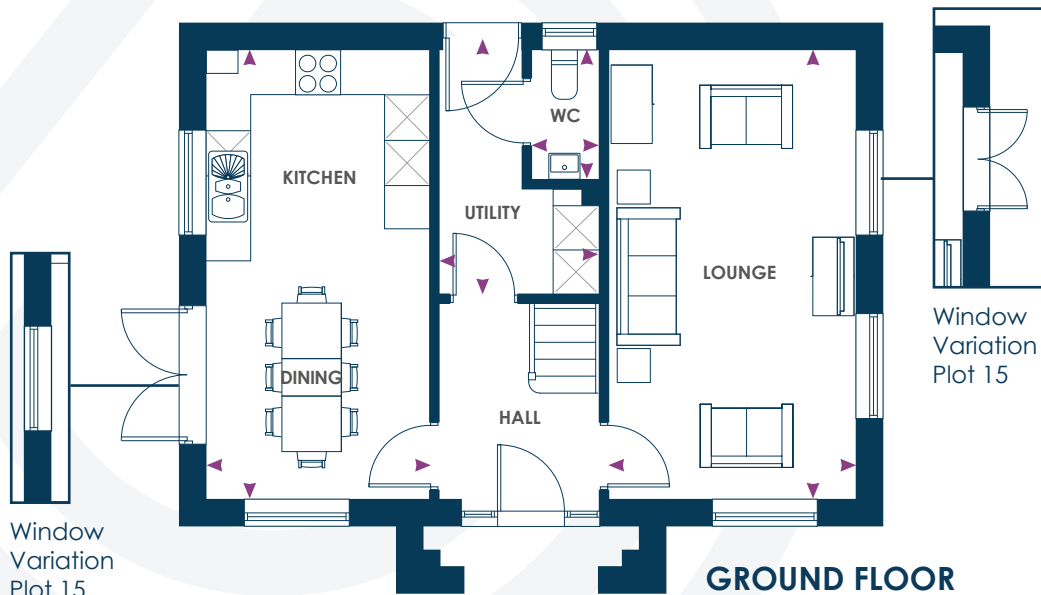


CONSUMER  
CODE FOR  
HOME BUILDERS  
[www.consumercode.co.uk](http://www.consumercode.co.uk)

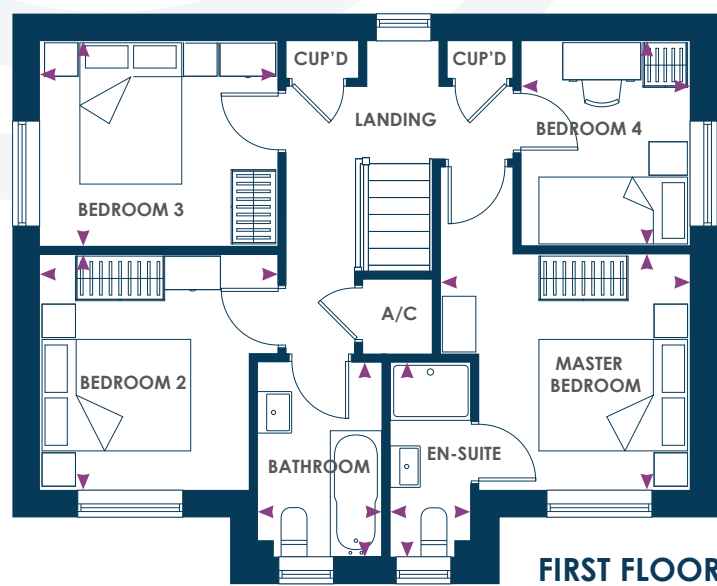


**poblliving**

[brynonnen@poblliving.co.uk](mailto:brynonnen@poblliving.co.uk)  
[www.poblliving.co.uk](http://www.poblliving.co.uk)



**GROUND FLOOR**



**FIRST FLOOR**

# The Hampstead

4 Bedroom Home

Plots: 15 & 43

108m<sup>2</sup> / 1163sqft<sup>2</sup>

## GROUND FLOOR

<b>Kitchen/Dining</b>	2.95m x 6.01m	9'7'' x 19'7''
<b>Lounge</b>	3.36m x 3.15m	11'0'' x 19'7''
<b>Utility</b>	3.27m* x 2.19m*	10'7'' x 7'1''
<b>WC</b>	0.92m x 1.67m	3'0'' x 5'5''

## FIRST FLOOR

<b>Master Bedroom</b>	3.36m x 3.15m	11'0'' x 10'3''
<b>En-suite</b>	1.13m x 2.60m	3'7'' x 8'5''
<b>Bedroom 2</b>	3.14m x 3.15m*	10'3'' x 10'3''
<b>Bedroom 3</b>	3.14m x 2.74m	10'3'' x 9'0''
<b>Bedroom 4</b>	2.29m x 2.74m	7'5'' x 9'0''
<b>Bathroom</b>	1.61m x 2.60m	5'3'' x 8'5''