

# THE DRYSLWYN

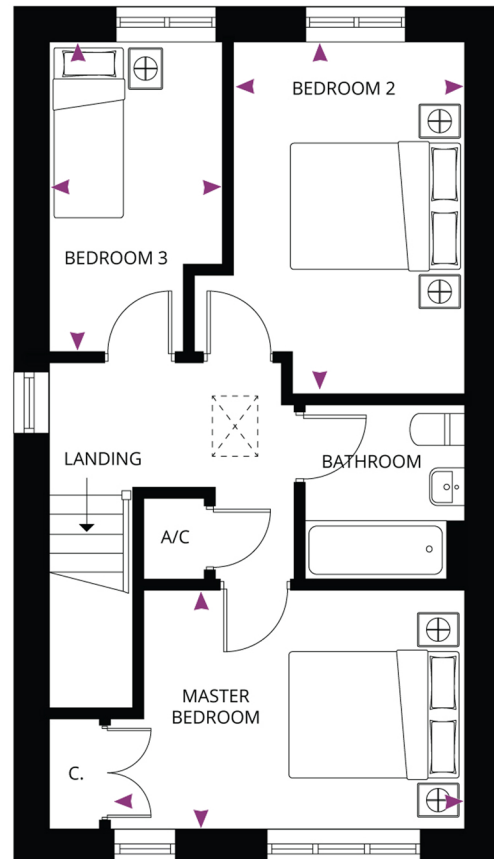
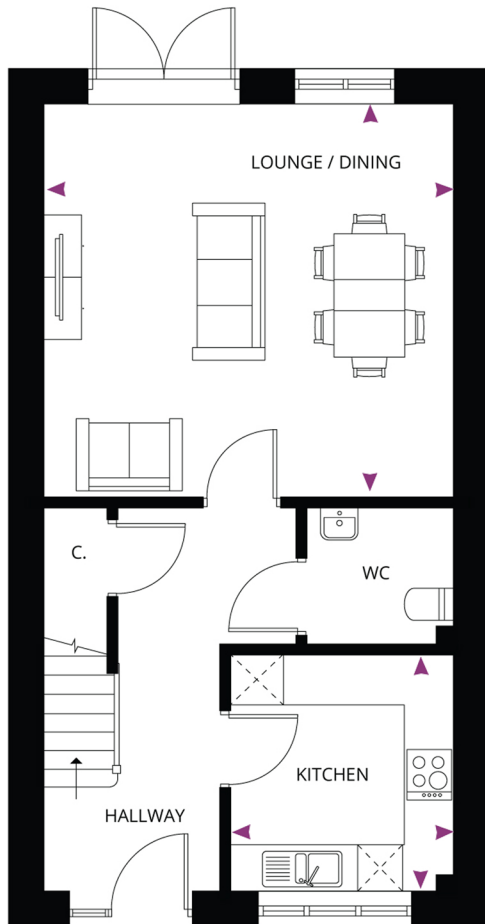
3 Bedroom Home

94m / 1016sqft

Plots: 20, 21, 77 & 78

poblliving

THE WILLOWS  
OLCHFA SKETTY



## GROUND FLOOR

**Lounge**  
5.02m x 4.67m    16'6" x 15'4"

**Kitchen**  
2.71m x 2.90m    8'11" x 9'6"

**WC**  
1.80m x 1.67m    5'11" x 5'6"

## FIRST FLOOR

**Master Bedroom**  
4.27m\* x 2.89m\*    14'0"\* x 9'6"\*

**Bedroom 2**  
2.84m x 4.26m\*    9'4" x 13'12"\*

**Bedroom 3**  
2.09\*m x 3.74\*m    6'10"\* x 12'3"\*

**Bathroom**  
2.11m x 2.00m    6'11" x 6'7"

info@poblliving.co.uk  
www.poblliving.co.uk

poblliving

CONSUMER  
CODE FOR  
HOME BUILDERS

www.consumercode.co.uk

tsi  
APPROVED CODE  
TRADING STANDARDS.UK

Dimensions stated are within 50mm (2") but should not be used as a basis for furnishings, furniture or appliance spaces etc.\*Dimensions listed are a maximum. Please note the handing of plots may vary from the plans shown. Please check individual plot details with our sales team.

# THE WILLOWS

OLCHFA  SKETTY

## SITE PLAN

### The Dinas

Bedrooms: 3  
Living area: 94.48m<sup>2</sup> / 1,017ft<sup>2</sup>  
Plots: 90, 91

### The Dryslwyn

Bedrooms: 3  
Living area: 94.38m<sup>2</sup> / 1,016ft<sup>2</sup>  
Plots: 20, 21, 77, 78

### The Powis

Bedrooms: 2  
Living area: 83.05m<sup>2</sup> / 894ft<sup>2</sup>  
Plots: 48, 49, 50

### The Conwy

Bedrooms: 2  
Living area: 83.05m<sup>2</sup> / 894ft<sup>2</sup>  
Plots: 11, 12, 13, 24, 25

