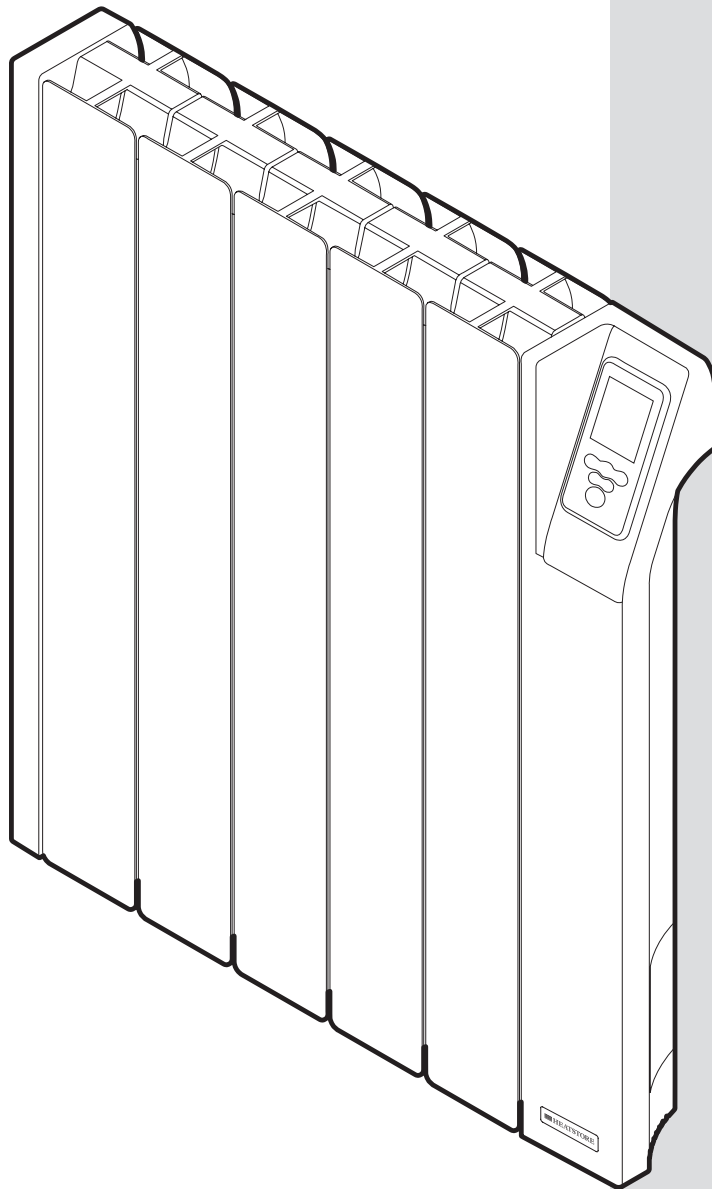


The logo for HEATSTORE, featuring the word "HEATSTORE" in a bold, sans-serif font. The letters "H", "E", "A", and "T" are red, while "S", "T", "O", "R", and "E" are grey. To the left of the text are four horizontal red bars of varying lengths, stacked vertically. The entire logo is enclosed in a red rounded rectangular border.

OPERATING INSTRUCTION MANUAL



Dynamic Intelirad Aluminium Radiator

Models: HSDI330 / HSDI500 / HSDI750 / HSDI1000
HSDI1500 / HSDI2000

These instructions should be read carefully and retained for future use. Note also the information presented on the appliance.



IMPORTANT

These instructions should be read carefully and retained for future use. Note also the information presented on the appliance.

IMPORTANT SAFETY ADVICE

When using electrical appliances, basic precautions should always be followed to reduce the risk of fire, electrical shock, and injury to persons, including the following:

IMPORTANT – The wall bracket supplied with the appliance must be used.

WARNING - DO NOT USE THIS HEATER IN THE IMMEDIATE SURROUNDINGS OF A BATH, A SHOWER OR A SWIMMING POOL.

IMPORTANT - If the heater is installed in a room containing a bath or shower, it must be so installed that switches and other controls cannot be touched by a person using a bath or shower.

Do not use outdoors.

Do not locate the heater immediately below a fixed socket outlet or connection box.

WARNING - In order to avoid overheating, do not cover the heater. Do not place material or garments on the heater, or obstruct the air circulation around the heater, for instance by curtains or furniture, as this could cause overheating and a fire risk. **NEVER** cover or obstruct in any way the heat outlet slots at the top of the heater or the air inlet slots in the base of the heater.



The heater carries a warning 'DO NOT COVER' to alert the user to the risk of fire that exists if the heater is accidentally covered.

CAUTION - Some parts of this product can become very hot and cause burns. Particular attention has to be given where children and vulnerable people are present. This appliance can be used by children aged from 8 years and above and by persons with reduced physical, sensory or mental capabilities or lack of experience and knowledge if they have been given supervision or instruction concerning use of the appliance in a safe way and understand the hazards involved. Children shall not play with the appliance. Cleaning and user maintenance shall not be made by children without supervision. Children of less than 3 years should be kept away unless continuously supervised. Children aged from 3 years and less than 8 years shall only switch on/off the appliance provided that it has been placed or installed in its intended normal operating position and they have been given supervision or instruction concerning use of the appliance in a safe way and understand the hazards involved. Children aged from 3 years and less than 8 years shall not plug in, regulate and clean the appliance or perform user maintenance.

Note that due care and consideration must be taken when using this heater in series with a thermal control, a program controller, a timer or any other device that switches on the heat automatically, since a fire risk exists when the heater is accidentally covered or displaced. If the supply cord is damaged it must be replaced by the manufacturer or service agent or a similarly qualified person in order to avoid a hazard.

WARNING - Servicing and product repairs should only be undertaken by the manufacturers approved service agent or a similarly qualified person, using only exact manufacturer approved spare parts.

WARNING - THIS APPLIANCE MUST BE EARTHED

The electrical installation must be carried out by a competent electrician, and be in strict accordance with the current I.E.E. Regulations for Electrical Equipment in Buildings. The wires in this mains lead are coloured in accordance with the following code:

GREEN AND YELLOW:	EARTH
BLUE:	NEUTRAL
BROWN:	LIVE

The heater is fitted with a length of flexible cable type H05VV-F size 3 x 1.0mm² for connection to the fixed wiring of the premises through a suitable connection box positioned adjacent to the heater. A means for disconnection must be incorporated in the fixed wiring of the premises in accordance with the wiring rules. The supply circuit to the heater must incorporate a double pole isolating switch having a contact separation of at least 3mm.

This heater is filled with a precise quantity of special oil. Repairs requiring opening of the oil container are only to be made by the manufacturer or his service agent who should be contacted if there is an oil leakage.

Regulations concerning the disposal of oil when scrapping the appliance have to be followed.

Supplementary Earth Bonding

Should Equipotential Earth Bonding be required the earthing conductor in the supply cord is deemed to provide the supplementary bonding connection (see Regulation 544.2.5, 17th Edition I.E.E. Wiring Regulations).

Please note that lit cigarettes, candles and oil burners, combined with the convection effect of electric heaters can cause soot deposits to build up on the surface directly above and to the sides of the heater. This is not a fault of the heater. Extensive burning of candles or smoking in the operating environment of this product can produce heavy discolouration within a few months of use.

Safety - Overheat protection

For your safety this appliance is fitted with a thermal cut-out. In the event that the product overheats for some reason, the cut-out prevents excessive temperatures on the product by cutting the power to the heater. Once the heater has cooled down, it will reset automatically, it will continue to cycle on and off automatically until the reason for overheating is removed. The display screen may flash red to indicate the product has overheated. To reset the display, remove the obstruction and hold Enter for 10 seconds.

Contents

- 6** **General**
- 6** **Wall Mounting**
- 8** **Quick Start Guide**
- 10** **Operation**
- 11** **Control Functions**
- 12** **Main Screen**
- 12** **Setting the Date and Time**
- 13** **Modes of Operation**
- 14** **Choosing and Setting a Mode**
 - Advance
 - Boost
 - Options
 - Child Lock
 - User Information
- 18** **Energy Saving Tips**
- 19** **Important**

User introduction

Thank you for choosing the Heatstore Dynamic Intelirad Aluminium Radiator. We manufacture the highest quality heating products for use in a wide variety of environments. This product has been designed to incorporate the latest, most advanced technologies to give you maximum control over your heating. The product allows for the simple setting of required time and temperature, and includes many energy-saving features which work automatically to help keep you warm for less.

Please read the instructions closely before first using the product, there is also quick-start guide on the next page if you need a reminder of how to use the basic functions in the future.

Inteli - Energy saving features

The Intelirad Aluminium Radiator has many features which are designed to save you money. It has a self-learning capacity, constantly monitoring the effect that its actions have on the room temperature. This means that your heater knows how long it will take to get to a certain temperature, or when to turn off as it approaches a comfortable temperature. This minimises the energy that it uses whilst maximising comfort, keeping you warm for the lowest possible cost.

Inteli - Aluminium fin technology

The Intelirad Aluminium Radiator incorporates fin technology that optimises the heat distribution and reduces the warm up time.

Inteli - Open window technology

Should a window or door be accidentally left open, your heater will detect the change in temperature and go into a standby mode, returning to normal operation when the window or door has been closed. This stops the heater from trying to warm the room while heat is escaping from it, saving you money.

Inteli - EcoStart (anticipatory control)

Having learnt how quickly it can heat up your room, the Intelirad Aluminium Radiator is able to turn on at just the right time in order to get the room up to a comfortable temperature when you want it. For example, if you get up at 7am, you would normally have to guess when to turn the heating on in order for it to pre-heat the room in time. Depending on how cold it is outside, this could mean the room is still cold when you have to get out of bed, or mean that its been warm for half an hour before it needed to be. Inteli EcoStart means that if you select 21 degrees celsius at 7am, the heater will turn on exactly when it needs to to meet this target, running for shorter periods of time when the weather is mild, and ensuring the room is nice and warm in the winter.

These functions are explained in more detail later, and can be disabled if the environment that the heater is installed into means that they are not needed.

General

The heater is designed for wall mounting using the wall bracket supplied. It should only be operated when in the upright position as shown - see Fig. 1 and Fig. 2. All models are splash proof to IP24 standard and may be used in bathrooms, however not in the immediate vicinity of baths, showers, water connections, wash basins or swimming pools. Before connecting the heater check that the supply voltage is the same as that stated on the heater.

Wall Mounting

IMPORTANT - The wall bracket supplied with the appliance must be used. The heater should be positioned observing the minimum clearances stated around the heater - see Fig. 1 and Fig. 2.

DO NOT locate the heater immediately below a fixed socket outlet or connection box.

1. Remove wall mounting brackets from the protective packaging and locate the wall mounting template.
2. Using the template, drill and plug the mounting holes specific to your particular model - see Fig. 3.
3. Fix the top wall mounting brackets securely to the wall using the screws provided.
4. The bottom wall mounting brackets should be clipped onto the product prior to mounting the product to the wall.
5. The product can now be hung on the top wall mounting bracket then fixed in place by securing the bottom wall bracket(s) in place.

Dimensions		
Model(s)	Watt (kW)	A (mm)
HSDI330	0.33 kW	348
HSDI500	0.50 kW	508
HSDI750	0.75 kW	588
HSDI1000	1.0 kW	668
HSDI1500	1.5 kW	908
HSDI2000	2.0 kW	1068

Fig. 1

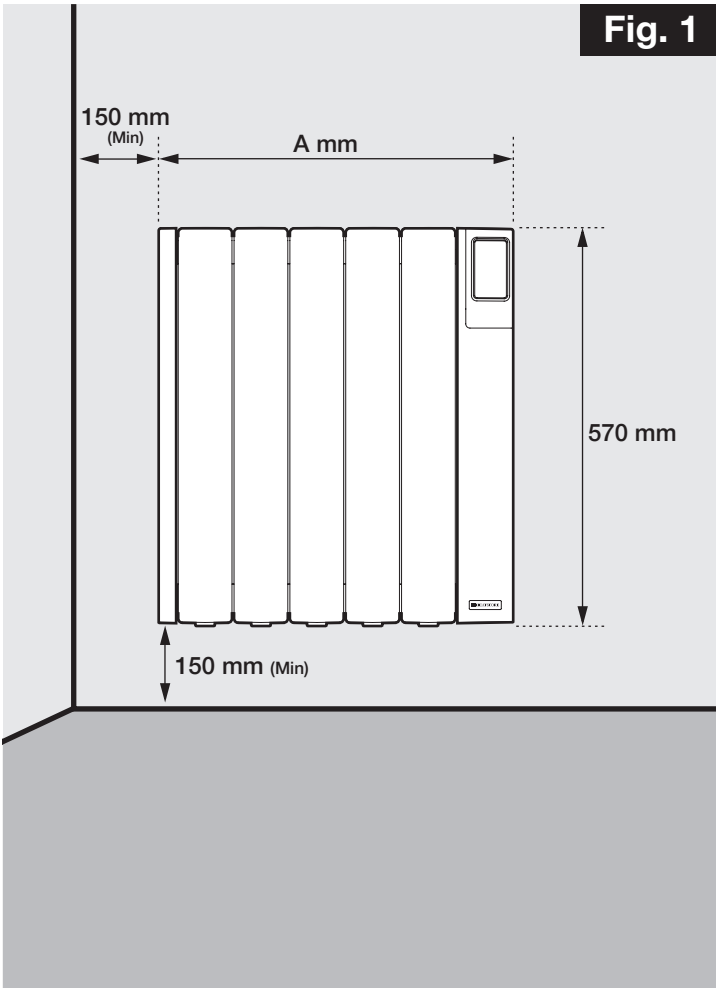


Fig. 2

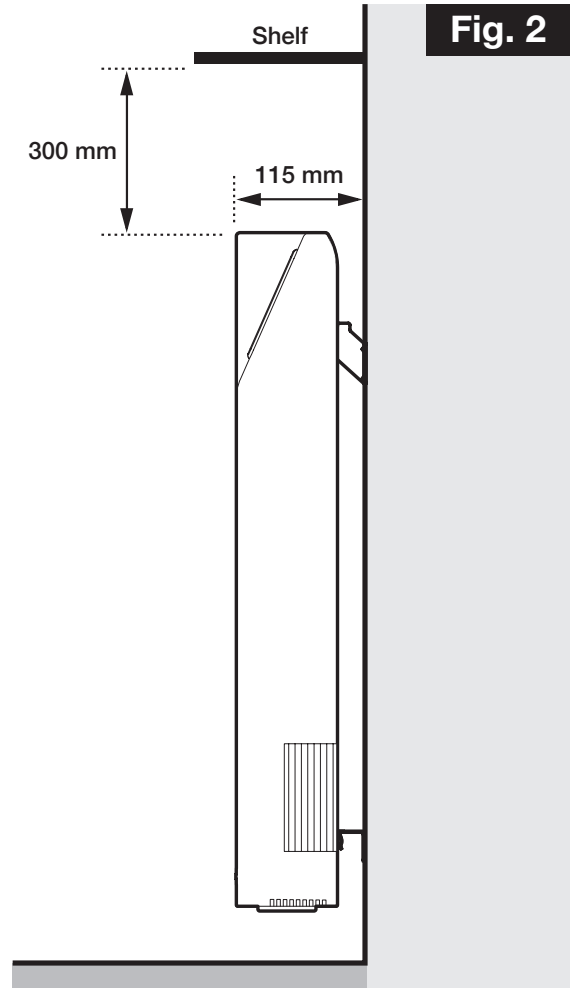
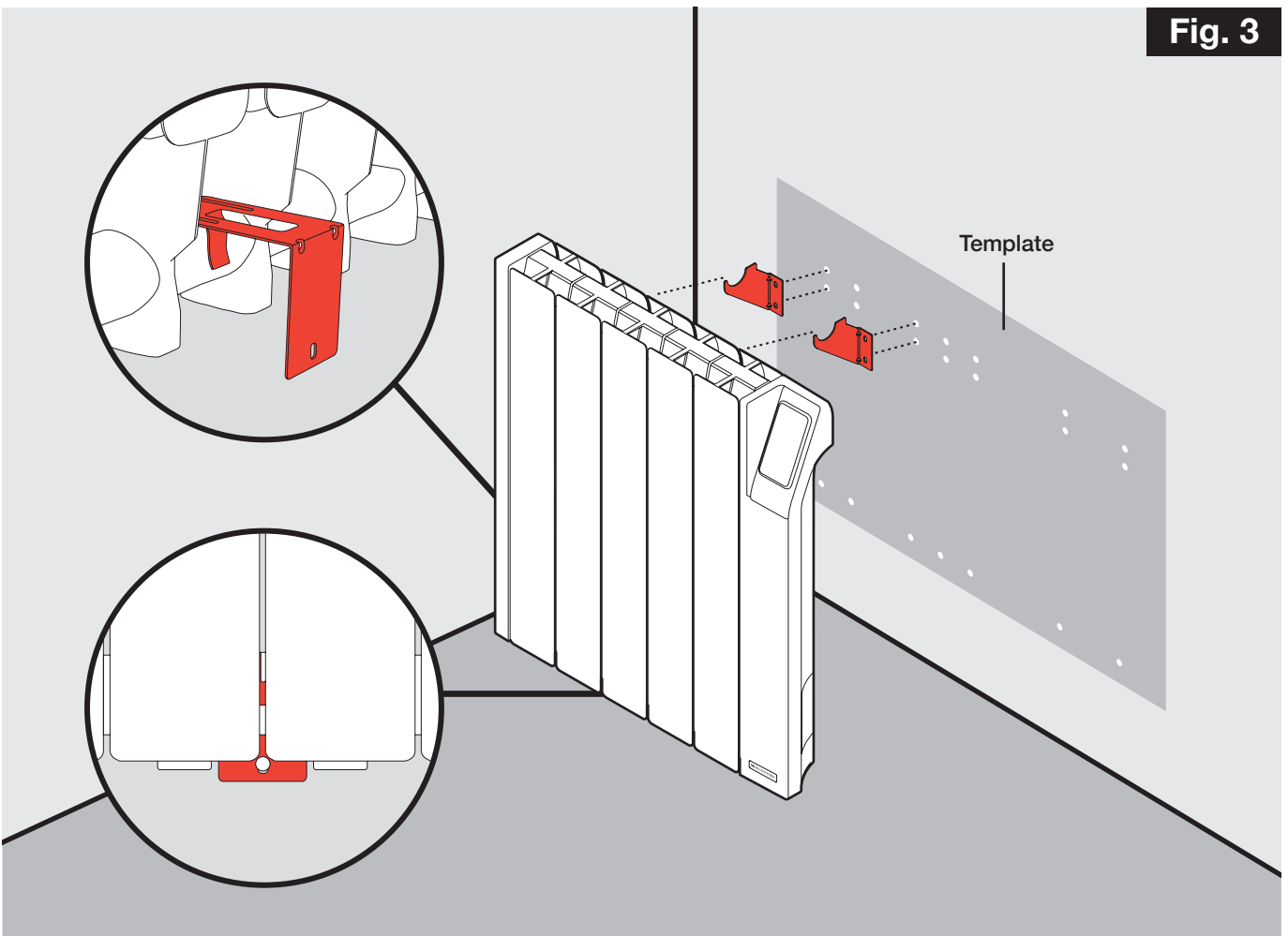


Fig. 3



Quick Start Guide

This guide is for quick reference only.
Please refer to the operating section for further information.

How Does the Heater Control Work?

The control allows you to choose when you want heat and at what temperature.
When using a timer mode (see below), Comfort On will display on the home screen to tell you when the heater is maintaining the temperature displayed. Comfort Off will display when the heater is outside of a timed heating period. When Manual, Eco or Frost modes are being used the heater will always maintain the temperature shown on the home screen.

Set the Time

To set the date and time on the heater, press Menu, then press the Enter with Time / Date highlighted. Press \wedge or \vee until the correct value is shown, then press Enter to confirm and move on to the next value. Repeat until all details are correct, and Set displays, then press Back.

The time is automatically adjusted in spring and autumn between Greenwich Mean Time (GMT) and British Summer Time (BST).

Set the Temperature

The temperature shown on the display is the room temperature set point. This is the temperature that the heater will maintain during the heating periods. If the room temperature is above this temperature then the heater will not operate. The heater leaves the factory with this temperature set at 21°C which represents a typical, comfortable room temperature. If you require a different room temperature then press either \wedge or \vee until the display shows the temperature you require.

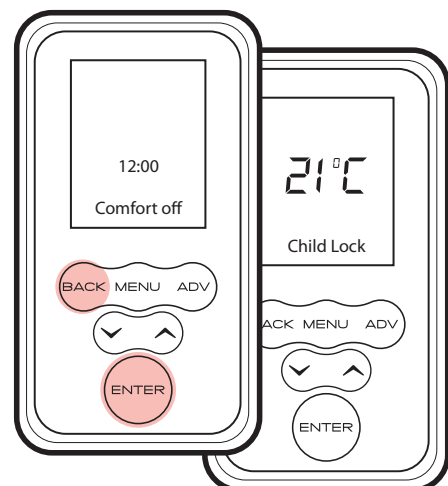
Timer Modes

Your Heatstore Intelirad Aluminium Radiator comes pre-programmed with four timer modes. These modes define the periods when the heater will operate in Comfort On mode. The four modes are:

Timer Mode	Description
Out All Day	6 hours heating per day in two periods
Home All Day	13 hours heating per day in one period
Holiday	Set the temperature and number of days for which you are on holiday
User timer	Customise times in four periods

Child Lock

If you need to lock the controls so that the settings cannot be changed then activate the Child Lock. To lock the controls press and hold both the Back button and Enter for three seconds. Child Lock will appear at the bottom of the screen. To unlock the control repeat the action by pressing both the Back button and Enter for three seconds.



Which Timer Mode is Best for Me?

The heater leaves the factory set in Out All Day mode. If you are out during the day and only require heat in the mornings and evenings then this mode will suit your lifestyle and you won't need to alter anything. If you are in during the day then you should select the Home All Day mode which is a single heating period. The User Timer mode will give you four periods of heating split throughout the day. If you are away for an extended period then you can use the Holiday mode. This allows you to reduce the heating during the period that you are away, reverting to the previously selected mode on the day you return.

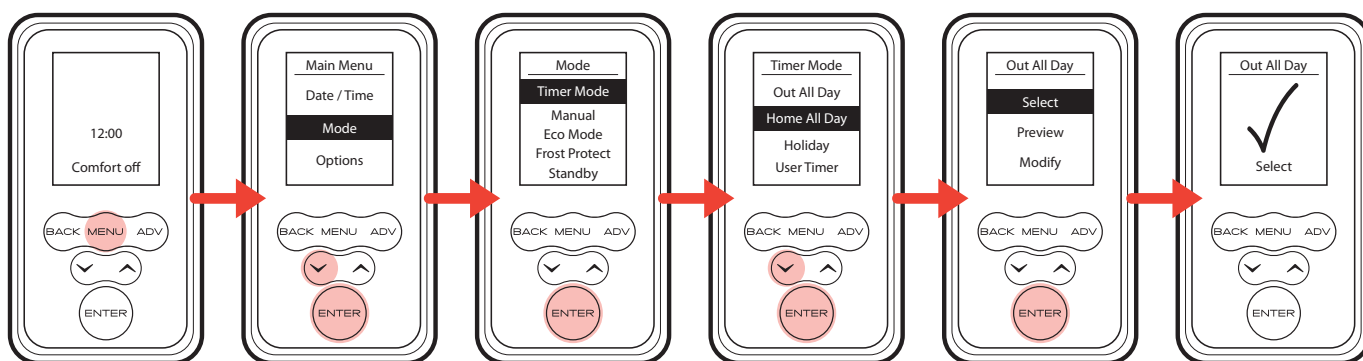
To choose a timer mode press Menu followed by Enter to select Timer Mode. Select the mode required by pressing ^ or v and then Enter. For options Out All Day, Home All Day and User Timer, three choices are available Select, Preview and Modify.

Select - Choose this timer option

Preview - View the times currently set

Modify - Change the times currently set

Please refer to page 14 'Choosing and Setting a Mode' in these operating instructions for information on how to modify the programmed times.



Advance

Sometimes you may be at home when you had not planned to be, or need to leave when you had planned to have the heating on. You can change the way you use your heating temporarily, this temporary change is achieved by using the Advance function.

When a timer has been selected, the Advance function allows you to begin the next period early. If the heater is in a Comfort Off period and you want heat - press the Advance button. If the heater is in Comfort On and you don't want heat, press the Advance button and it will go off until the beginning of the next Comfort On period.

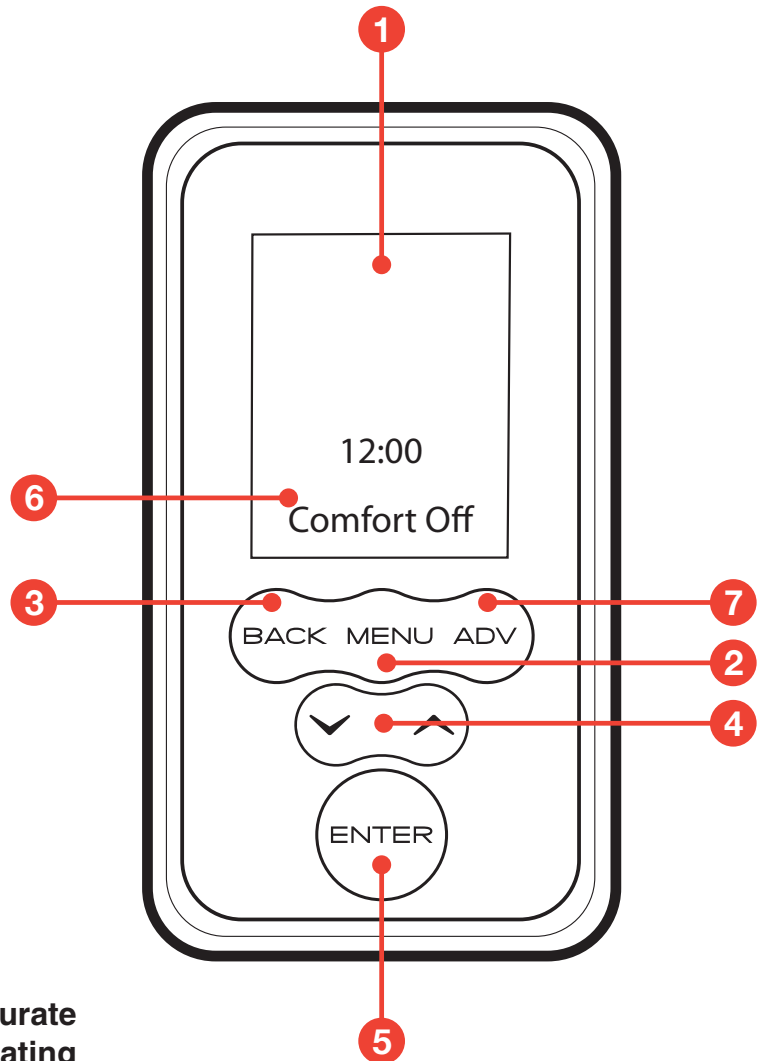
Advance Boost

The Advance button is also used to enter the boost mode which provides temporary heating for one, two, three or four hours. Press the Advance button twice to begin a one hour boost. Continue pressing the Advance button to enter the longer boost periods.

Operation

The controls are located on the top right of the heater. The heater is fitted with an adjustable electronic controller consisting of a display screen and six touch buttons.

- 1 Display Screen
- 2 'Menu' Button
- 3 'Back' Button
- 4 'Up and Down' Arrows
- 5 'Enter' Button
- 6 Heating Status
- 7 'Advance' Button



The heater is fitted with a highly accurate electronic thermostat incorporating Dynamic Efficiency + technology. With an accuracy of just 0.2°C enabling the room temperature to be controlled. The minimum room temperature is 7°C. The maximum temperature is set to 26°C by default however this can be increased to 32°C if required. A temperature of 21°C represents a normal room temperature.



NOTE:
Should the heater not operate, this may be due to the room temperature being higher than the thermostat setting.

Control Functions

The heater controls can be easily adjusted by using the six buttons on the User Interface.

- 1 The Display Screen shows the options available at each stage of adjustment.
- 2 Menu - displays the main options list;
 - Date/Time - Set the date and time.
 - Mode - Set the mode of operation.
 - Options - Temperature units, daylight savings time, lock settings and service information.
- 3 Back returns to the previous programming stage.
- 4 The \wedge and \vee buttons are used to navigate through the menus and alter setting values. The \wedge and \vee buttons are also used to adjust the required room temperature on the main screen. The screen colour changes based on the temperature selected, showing deep blue through to bright red.

7C -16°C = Blue Screen
17- 19°C = Green Screen
20- 21°C = White Screen
22°C + = Red Screen
- 5 Enter is used within the menu options to confirm settings. On the main screen pressing Enter will display the enabled features.
- 6 Heating Status is the timed periods during which the heater is providing heat are defined as Comfort On (this is displayed at the bottom of the screen). While constant heat modes are active, the mode of operation is displayed at the bottom of the screen e.g. Manual.
- 7 The Advance button overrides the heating settings and changes the operational state of the heater. If a timer mode is selected, pressing Advance will cause the heater to remain on until the next Comfort Off period is due, or off until the next Comfort On period is due.

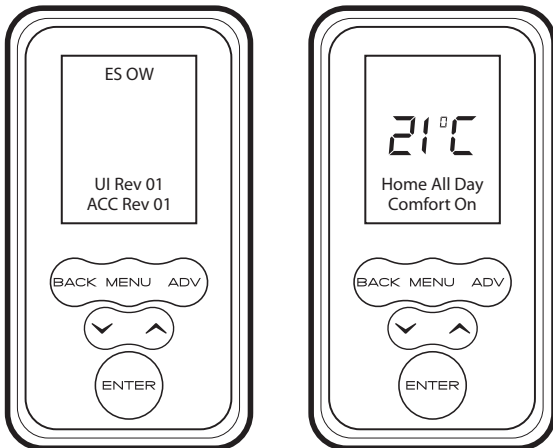
If the heater is in a constant mode of operation, Advance can be used to switch the appliance on and off.

Advance is also used to enter Boost mode. Boost mode delivers heat for between one and four hours.

Main Screen

After 30 seconds the heater will default back to the Main Screen. Here the chosen temperature is displayed along with the mode of operation. Any use of the Advance function will be displayed here, and pressing Enter will show the functions which are enabled.

When left inactive for a long period of time this display will 'sleep' and the text will disappear. Press any button for its return.



NOTE:

The display screen will return to the main screen after a period of 30 seconds of inactivity.



NOTE:

Pressing enter will show the functions which are enabled, e.g. ES and OW above. Ref: page 17.

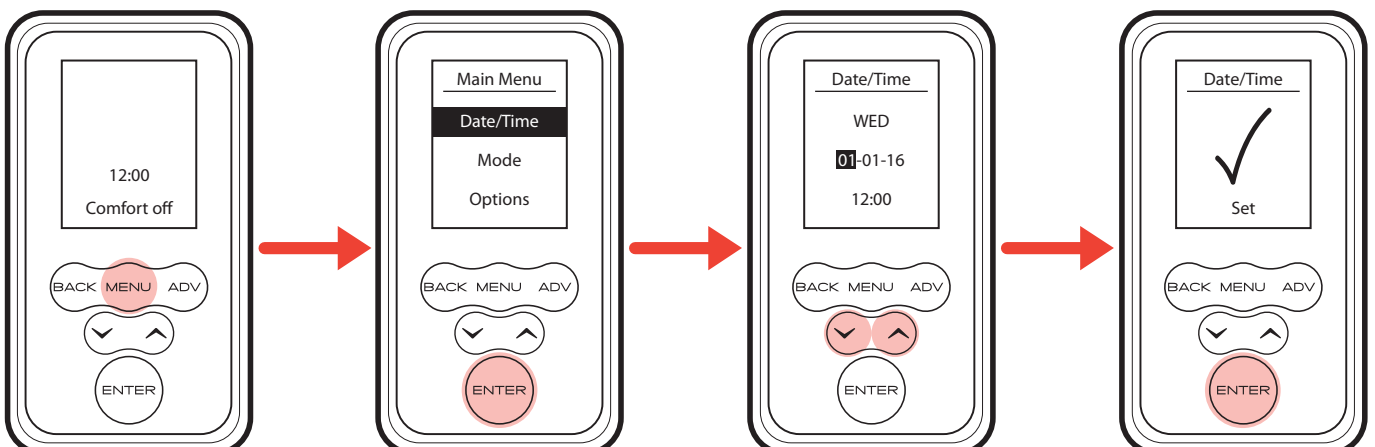
Setting the Date and Time

The heater incorporates a real time clock with calendar function. The time clock has a battery backup that will keep the clock running in the event of a mains power outage.

To adjust the time or date follow the steps below.

Press the Menu button. Select Date/Time by pressing the Enter button. Press ^ and v to select the correct day of the month and press Enter to select.

Repeat this operation, until the date and time has been set, ensuring to press Enter to select. Press Back button to return to the Main Screen once Set has been displayed.



Modes of Operation

The heater comes pre-programmed with a set of heating profiles. There are four options available - three pre-programmed and one user adjustable timer;

1. **Out All Day (pre-programmed)** - has the following preset times Monday to Sunday, which can be altered if desired 07.00 until 08.30 17.30 until 22.00
2. **Home All Day (pre-programmed)** - has the following preset times Monday to Sunday, which can be altered if desired; 08.00 until 21.00
3. **Holiday (pre-programmed for 7 days at 10°C)** - set the number of days required (from 1 to 300) and the temperature required. 7°C is advised if you just want to protect the property from frost while you are away.
4. **User Timer** - provides greatest flexibility to the user. Four time slots are available throughout the day and these can be customised for each day of the week.

The heater can also maintain a constant room temperature using the following modes;

1. **Manual mode** heats the room to a comfortable temperature of 21°C.
2. **Eco Mode** maintains a room temperature of 18°C. By reducing the room temperature slightly, significant energy savings can be achieved. The green display colour indicates that selected temperature provides a comfortable room temperature while reducing energy consumption.
3. **Frost Protect mode** maintains a room temperature of 7°C. This mode should be used to provide protection against frost as indicated by the blue display.

Select Standby to switch the appliance into standby mode. Heating will not be provided. Press any of the buttons to resume operation in the previously selected mode.



NOTE:

In all modes, ^ and v can be used to adjust the required room temperature. In timer modes, this change is temporary and the heater will set the room temperature based on the saved heating profiles.

Choosing and Setting a Mode

Timer Modes

To choose a timer mode press **Menu** and then **∨** to select **Mode**. Then press **Enter**. Then select **Timer Mode**, again using the **Enter** button.

Select the mode required, by pressing the **∧** or **∨** followed by **Enter**.

For options **Out All Day**, **Home All Day** and **User Timer**, three choices are available - **Select**, **Preview** and **Modify**.

- **Select** - choose this timer option.
- **Preview** - view the times currently set.
- **Modify** - change the times currently set.

When **Modify** is chosen, select and change each option using the **∧**, **∨** and **Enter** buttons. At the end of each period, select **Next** to move to the following period. When a day is complete select **Save** to update it.

Once the first day has been set up it is possible to copy these settings to successive days or all days by either choosing **Copy Next** or **Copy All**.

If preferred each day can be modified individually and saved. It is also possible to **Clear** each day or **Clear All** days. Options are;

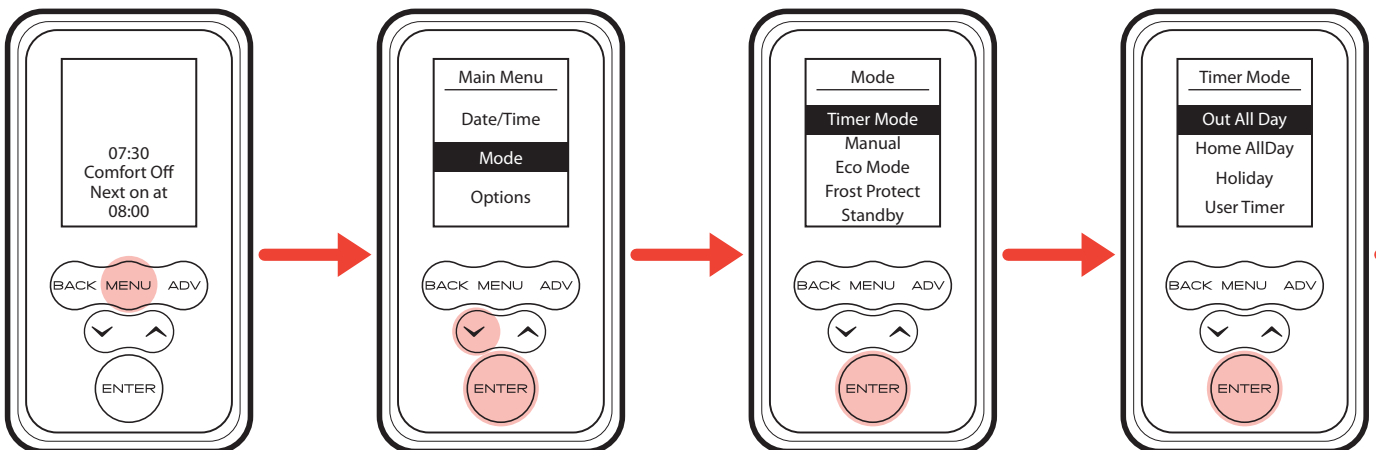
- **Save** - save times for one day.
- **Copy Next** - copy times to following day.
- **Copy All** - copy times to all seven days.
- **Clear** - zero all times that day.
- **Clear All** - zero times for all seven days.



NOTE:

Once modified a programme must be selected if you want to begin using it.

To select a mode, choose **Select** and press **Enter**.



If anticipatory control is disabled, the heater will not operate until the beginning of the heating period. This should be taken into consideration when setting the heating periods.

In Holiday mode the number of days that the room will be unoccupied can be adjusted together with the required room temperature.

Press \wedge and \vee to choose a holiday period between 1 and 300 days, then press the Enter button.

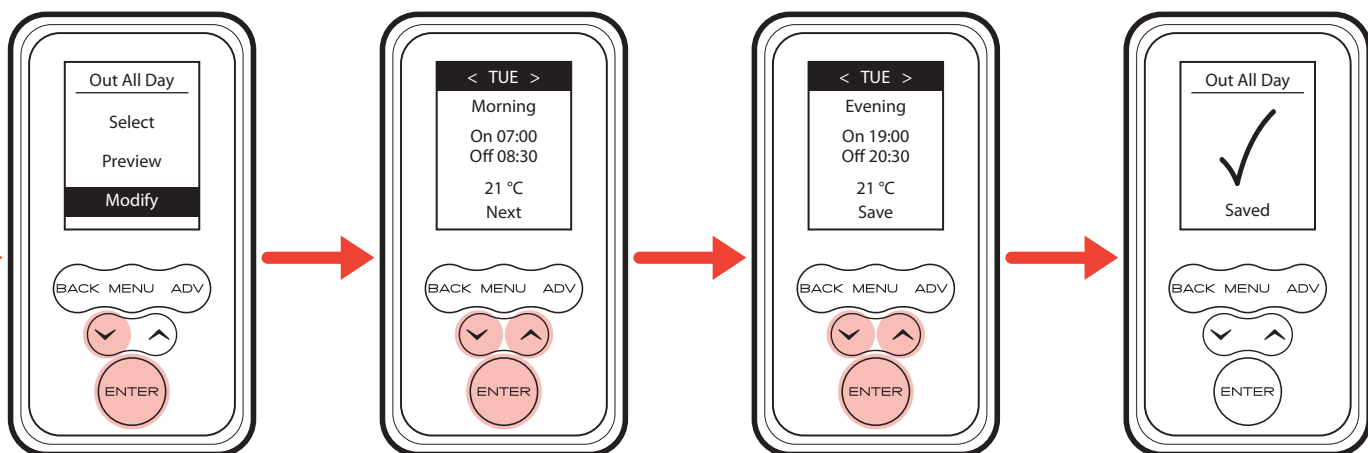
Press \wedge and \vee to choose a temperature to be maintained during this period and press the Enter button. At the end of the holiday mode the heater will automatically revert back to the previously selected programme.

Constant Heat Modes

To choose a constant heat mode press Menu and \vee to select Mode and press Enter. Then select the required mode, again using the Enter button.



NOTE: If the anticipatory control is enabled the heater will maintain the room at the required temperature for the duration of the heating period. To achieve this, the heater will begin heating the room before the start of the heating period to ensure the room is at the required temperature when the period starts.



Advance

The Advance function allows the heating profile of the heater to be changed temporarily. When a timer has been selected, the Advance function is used to begin the next Comfort On mode early. If the heater is in Comfort Off mode and heat is required, press the Advance button.

If the heater is in Comfort On and heat is not required, press the Advance button and the heater will turn off until the beginning of the next Comfort On period. If the heater is in Manual, Eco Mode or Frost Protect and pressing the Advance button will switch off the heater. The heater will remain off until the Advance button is pressed again.



Boost

The Advance button is also used to enter the Boost mode which provides temporary heating for one, two, three or four hours. Press the Advance button twice to begin a one hour boost. Continue pressing the Advance button to set longer boost period.



Options

The Options menu allows the settings to be modified to suit the user's preferences. These are;

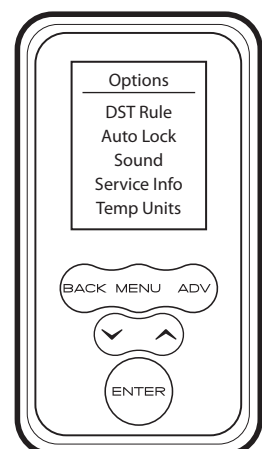
DST Rule - Select your daylight saving setting. The heater clock will automatically adjust for daylight saving (British Summer Time as it is often referred to). If no adjustment is required then select none.

Auto Lock - Enable or disable the auto lock feature. This feature locks the interface if left inactive for longer than one minute. To unlock the appliance, press and hold Back and Enter for two seconds.

Sound - Audio feedback can be enabled or disabled.

Service Info - Service information is displayed.

Temp Units - Choose whether your unit displays degrees centigrade or Fahrenheit.



Child Lock

To lock the controls press **Back** and **Enter** for three seconds. **Child Lock** will appear at the bottom of the screen. To unlock the control repeat the action of pressing **Back** and **Enter** for three seconds.



NOTE:
The controls cannot be adjusted when child lock is active.



User Information

User Information

Press and hold **Enter** for five seconds to display the **User Information** menu;

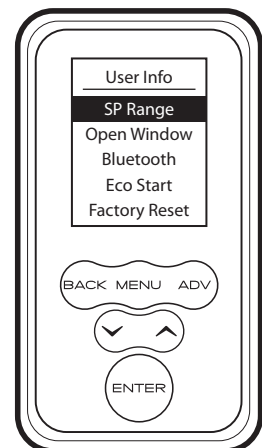
SP Range allows adjustment of the maximum temperature range.

Open Window detection (OW), when enabled, the heater will reduce the target room temperature to limit the energy waste when an open window is detected. Enabled as default.

Bluetooth - allows the Bluetooth pairing function to be enable or disable. This heater will function with bluetooth once App software is complete (not available until 2017).

EcoStart (ES) - to achieve the desired temperature at the onset of the timed **Comfort On** period the appliance anticipates when it needs to start heating prior to the onset of the timed on period. E.g. room is 16°C, with 21°C at 7am set on the timer. With **ES** on the control will start to heat the room before 7am, reaching 21°C at this time. With **ES** off the heater will start to heat the room at 7am and will reach 21°C after this time. Enabled as default.

Factory Reset returns all settings to the factory presets.



Energy Saving Tips

The energy we use to heat, light and power our homes contributes over a quarter of the UK's carbon emissions, the principle contributor to climate change. Around half the energy used in the home is for heating and hot water, so using your heating system efficiently will not only help the environment, but also save you money.

Energy efficiency tips for heating and hot water

- 1. Don't set the temperature to high...**
By reducing the thermostat setting by just 1°C can reduce your energy use by as much as 10%. And if you're going away during the winter, leave the thermostat on the frost protection setting to provide protection from freezing at a minimum cost.
- 2. Use it where you need it...**
Set the appropriate temperature on your heaters for the room they are in; for example, leave the thermostat on a heater in a spare bedroom on a lower setting.
- 3. Use it when you need it...**
Use heaters fitted with timers or linked to central controllers to turn the heating on only when you need it and automatically switch it off when you don't.
- 4. Curtains**
Close your curtains at dusk to stop heat escaping through the windows.
- 5. Windows**
Nearly 25% of heat loss can occur through poorly insulated frames and single glazing. If you can't afford to double glaze all your windows, go for the rooms you heat most.
- 6. Treat your hot water tank...**
Give it a jacket An insulating jacket for hot water tanks costs only a few pounds and pays for itself within months. Fit one that's at least 75mm (3") thick and you could save £10-15 a year.
- 7. Water**
Use a shower if you have one to save time, money and water. Don't set the thermostat too high on your water heater - 60°C/ 140°F is usually adequate for bathing and washing. Put the plug in when running hot water in your sink - leaving hot taps running is both wasteful and expensive. Ensuring dripping taps are repaired quickly. In just one day, you could waste enough water to fill a bath.

Other Energy Saving Tips for Around the Home

- 1. Lights**
Turn off lights whenever you leave a room for more than ten minutes. Use low-energy bulbs wherever you can as they use less than a quarter of the electricity used by ordinary light bulbs and last ten times longer!
- 2. Cooking**
Use the right size pan for food and cooker hob. Keep saucepan lids on - this enables you turn down the heat. Boil water for cooking in a kettle first.

Important

During the initial operation, some odour may be noticed due to the newness of materials used in manufacture. This is normal and will disappear after a short period or use. It is however advisable to keep the room well ventilated.

Cleaning

WARNING - ALWAYS DISCONNECT FROM THE POWER SUPPLY BEFORE CLEANING THE HEATER.

Before commencing cleaning, unplug the heater and allow it to cool. Disconnect the electricity supply to the appliance. The outside can be cleaned by wiping it over with a soft damp cloth and then dried. Do not use abrasive cleaning powders or furniture polish, as this can damage the surface finish. To release the heater from the wall bracket for cleaning or redecoration, depress the latch on both brackets (See Fig. 3) and hinge forward.



Recycling

For electrical products sold within the European Community. At the end of the electrical products useful life it should not be disposed of with household waste.

Please recycle where facilities exist. Check with a Local Authority or retailer for recycling advice in your country.

Warranty

The Heatstore Dynamic Intelirad heater is covered with the following warranties

3 Years on site Warranty

3 years electronics Warranty

10 years Aluminium Body Warranty

After sales service

If the Heatstore Intelirad appears damaged when first received or does not function correctly contact us by phone 0117 923 5375 or email enquiries@heatstore.co.uk

Do not return the product in the first instance as this may delay us providing you with a satisfactory service. **ACCIDENTAL DAMAGE IS NOT COVERED UNDER THE WARRANTY**

Your product is guaranteed for 3 years from the date of purchase. Within this period we undertake to repair or exchange this product free of charge provided it has been installed and operated in accordance to these instructions.

At the end of the 3 years, a further 7 years warranty applies only for the Aluminium body. Should you require assistance with this product, please call our contact centre on 0117 923 5375 or email enquiries@heatstore.co.uk

To assist you, we will need the following information: model number and serial number (these are found on the back of the appliance). Original purchase receipt, nature of the fault and date of purchase.

Please retain your receipt as proof of purchase.

Your rights under this guarantee are additional to your statutory rights, which in turn are not affected by this guarantee

Model Identifier(s):		HSDI330	HSDI500	HSDI750	HSDI1000	HSDI1500	HSDI2000	
Heat output								
Nominal heat output	P _{nom}	0.33	0.50	0.75	1.00	1.50	2.00	kW
Minimum heat output (indicative)	P _{min}	N.A.	N.A.	N.A.	N.A.	N.A.	N.A.	kW
Maximum continuous heat output	P _{max,c}	0.33	0.50	0.75	1.00	1.50	2.00	kW
Auxiliary electricity Consumption								
At nominal heat output	e _{lmax}	0.00	0.00	0.00	0.00	0.00	0.00	kW
At minimum heat output	e _{lmin}	0.00	0.00	0.00	0.00	0.00	0.00	kW
In standby mode	e _{lSB}	0.0012	0.0012	0.0012	0.0012	0.0012	0.0012	kW
Type of heat output/ room temperature control								
with electronic room temperature control								Yes
electronic room temperature control plus week timer								Yes
with open window detection								Yes
with adaptive start control								Yes
Contact details	Heatstore, Unit 12, Access 18, Bristol, BS11 8HT, United Kingdom							

CE This product complies with the European Safety Standards EN60335-2-30 and the European Standard Electromagnetic Compatibility (EMC) EN55014, EN60555-2 and EN60555-3. These cover the essential requirements of EEC Directives 2006/95/EC and 2004/108/EC



Telephone: 0117 923 5375

Fax: 0117 923 5374

Heatstore, Unit 12, Access 18, Bristol, BS11 8HT

www.heatstore.co.uk