

Maes y Ffynnon



The Osborn

3 Bedroom Home

CGIs are indicative only and are subject to change, elevations may vary.

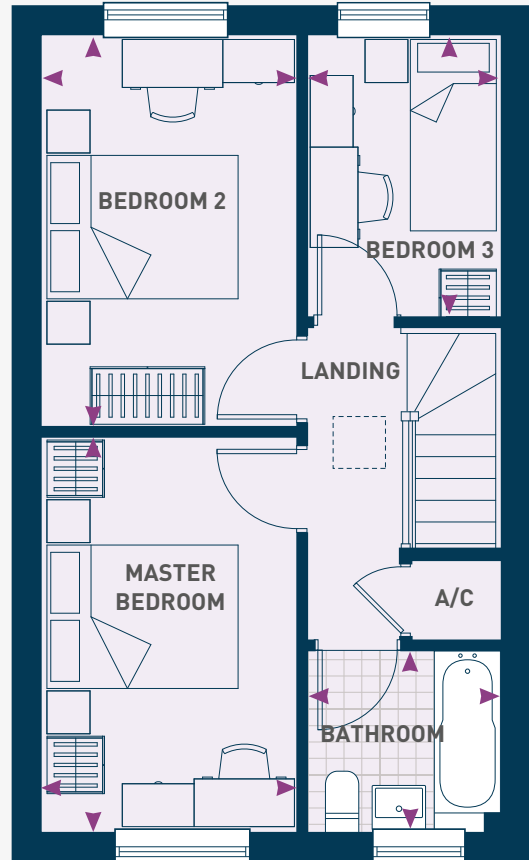
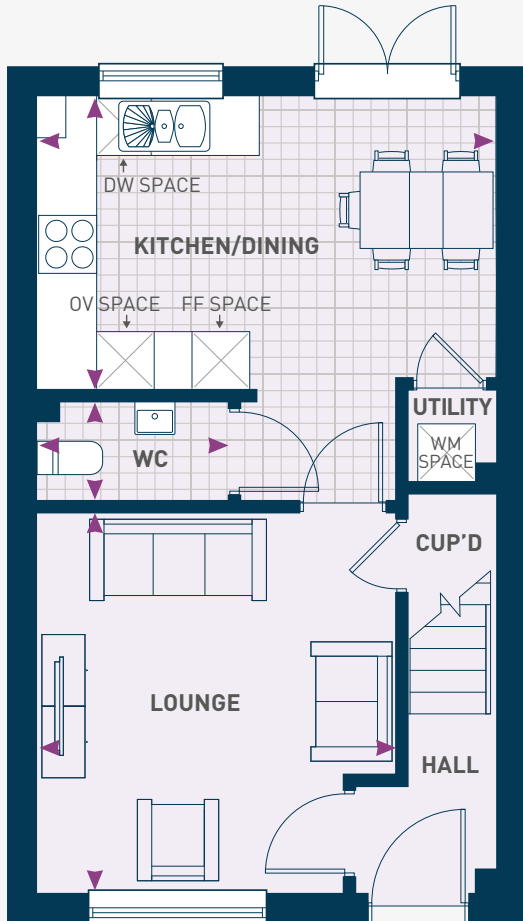
maesyffynnon@poblliving.co.uk

www.poblliving.co.uk

The Osborn

3 Bedroom Home

Living Area: 79.0m² | 851ft²



GROUND FLOOR

Lounge
3.73*m x 3.98*m 12'2" x 13'0"

Kitchen/Dining
4.81m x 2.93m 15'9" x 9'7"

WC
2.06m x 1.09m 6'7" x 3'6"

FIRST FLOOR

Master Bedroom
2.65m x 4.11m 8'8" x 13'5"

Bedroom 2
2.65m x 4.14m 8'8" x 13'6"

Bedroom 3
2.05m x 2.93m 6'8" x 9'7"

Bathroom
2.05m x 1.92m 6'8" x 6'3"

Dimensions stated are within 50mm (2") but should not be used as a basis for furnishings, furniture or appliance spaces etc. Please note the handing of plots may vary from the plans shown. Please check individual plot details with our sales team.

*Dimensions listed are maximum.