

Thincoat Finishes

Aftercare & Maintenance





General Maintenance & Cleaning Terrix Polymer-Silicate Renders

Minor Damaged Areas

If there are only a few splashes/marks then very carefully mechanically remove (with knife or similar sharp instrument) care should be taken not to damage the render. Complete the repair with our Polymer-Silicate paint to match.

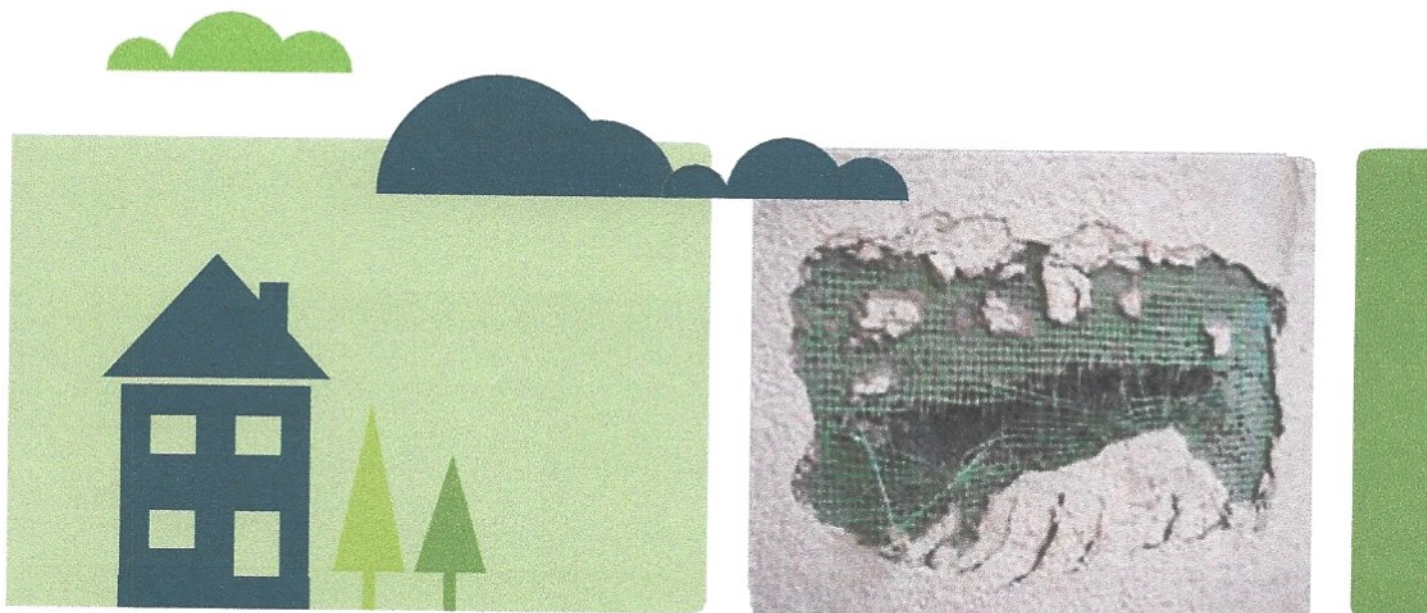
Large Damaged Areas

If there are larger areas affected and the splashes can be removed without damaging the render (and/or change texture) then paint the entire area with a silicone or acrylic paint to match.

Severely Damaged Areas

If the damages cannot be removed without damaging the render/texture then remove damaged render, apply Terrix base coat with mesh, Terrix primer and Terrix Polymer-Silicate top-coat. Please remember - all repairs are best undertaken by a professional tradesman with experience of the materials and systems.

For any damage that does occur, we recommend you contact F&T Terrix Technical Team 0333 320 1513.





Addition of Metalwork

Any metalwork to be added to the building such as clothes lines, hooks, etc, should be well painted or otherwise protected if they are made from a ferrous metal. Attachment to the building should be made with fixings, which penetrate through the system and into the substrate, for example, sleeved bolts or extended length fixings. These should be sealed at their abutment with the system using a good quality Siga sealant.

Waste Pipes

Should paint stripping at doors or windows using a blow lamp or similar be carried out, then some protection of the adjacent system should be used to prevent discolouration of the surface, (particularly a painted one) and damage to the sealant at the junction of the system.

Property Extensions

Any additions to the property, for example, outhouses and lean-to's, should be sealed where it abuts the addition using a good quality Siga sealant.

Garden & Plant Considerations

Keep garden soil levels as far below the system level as possible as soil splashing will soon discolour the base of the system. Plants, trees and creepers can cause staining of lightly coloured finishes and care should therefore be taken in the positioning of them. Climbing plants, provided they have a properly fixed trellis available for them will not cause any damage to the system. However, they may cause some staining of lightly coloured finishes.

General Cleaning

Mild soapy water may be used to remove general dirt or soil on the system. The area should be lightly brushed with a soft brush and hosed down.

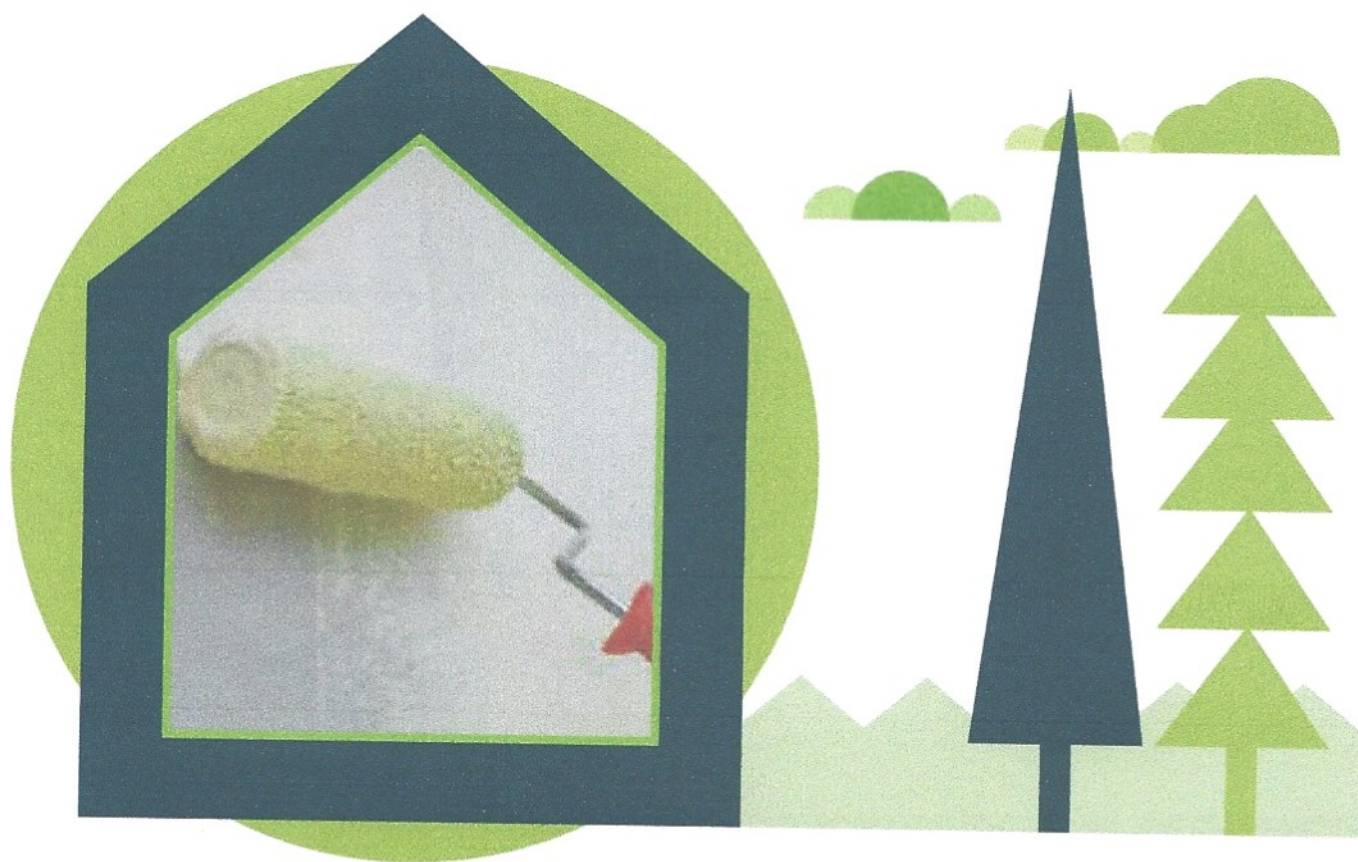
Light power washing is acceptable. A test panel should always be completed first and the power washer should be at a maximum of 100 bar and kept at least 1 meter away from the Polymer-Silicate system. Brick cleaner and acid wash is not advisable and is likely to damage the Polymer-Silicate.

Over Painting

Terrix Polymer-Silicate paint is available in the same colour as the Polymer-Silicate texture and can be used to cover paint where required. Painting the Polymer-Silicate render will not effect the texture to any great extent.

Graffiti Removal

Keeping the system free of graffiti can now be accomplished by the use of a range of pre-applied graffiti removing materials, which will not harm the Polymer-Silicate render. Such materials are readily available from F & T Terrix. These products can deter potential graffiti artists, it also enable's masonry and render to be cleaned down effectively. However there could be a slight change in colour where applied.



Satellite Dish Installation

If fitting a satellite dish or receiver to a completed area of the external wall insulation system, either of the 2 methods outlined here should be adopted;

1. Drill out approximately sized holes through the system back to the wall surface and insert cylindrical noncorrosive tension spacers at the relevant dish fixing points. The support bracket for the dish may then be installed as normal but should be tightened against the spacers and not the render system. Siga sealant must be neatly applied around the spacers to ensure water penetration is prohibited.
2. Install Thermax insulation fixings through the EWI system into the main substrate as per manufacturer's instructions. Drill a suitably sized hole and clean out the hanger bolt and drill hole. Install the fixings ensuring the black thermal barrier is flush with the render. Screw in the Thermax fixing and seal, using Siga sealant. Mount the fixture and hand tighten the screw.

Please remember - All installations are best undertaken by a professional tradesman.





Should any further advice be required on any maintenance related topic, then this may be obtained from F & T Terrix Building Systems Limited.

Please remember - All repairs are best undertaken by professional tradesmen with experience of the materials and systems.

F & T Terrix Limited will always advise of local companies with experience of our products and systems.

Workmanship that is poorly carried out will not only spoil the appearance of the products but may also adversely affect the life expectancy of the system and the product warranty.

Recipients of F & T Terrix products must take responsibility for existing laws and regulations and always operate within Health and Safety guidance on the use of these products.

The information provided within this page is deemed to be accurate to the best of our knowledge and given in good faith.





Head Office

F & T Terrix Limited
75 St Georges
Bolton
BL1 2DD

Technical Support: 0333 320 1513
www.ft-terrix.com

Bridgend

Unit 6
Kestral Close
Bridgend Industrial Estate
Bridgend
CF31 3RW

Tel: 01656 662096

