



# The Apartments

1 Bedroom Homes

**Living Area:** 46.9m<sup>2</sup> | 505ft<sup>2</sup>

**Apartment Numbers:** 5, 6, 7, 8, 9, 10, 11, 12 & 13

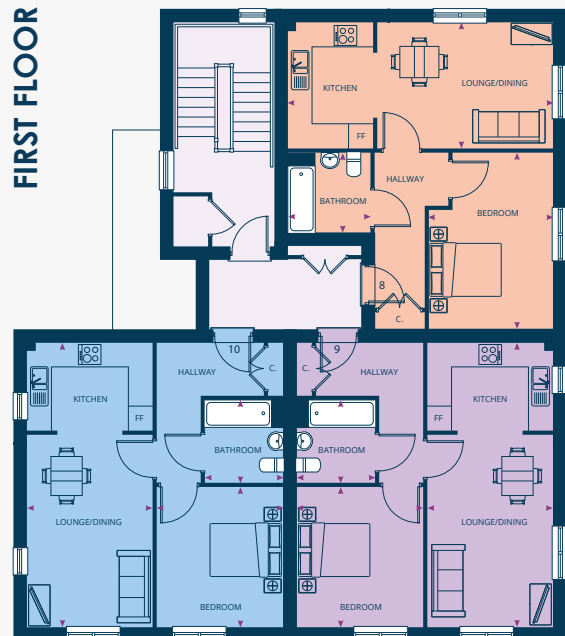
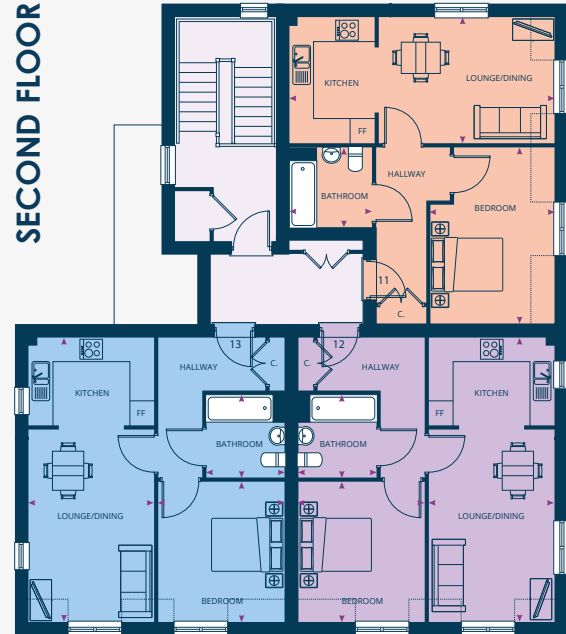
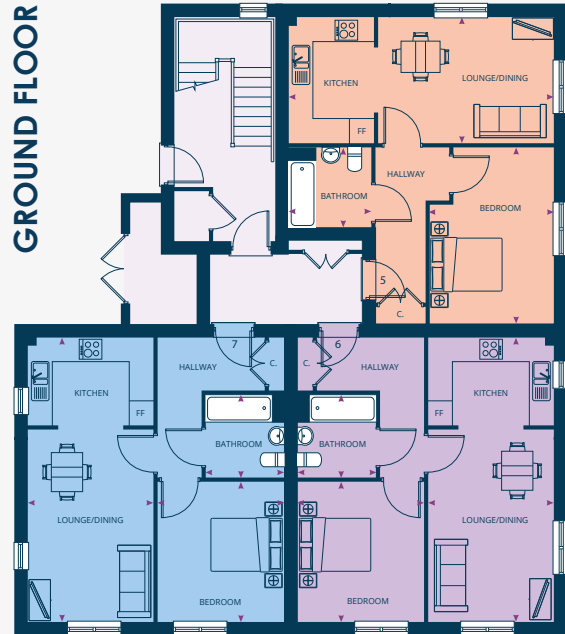
CGIs are indicative only and are subject to change, elevations may vary.

[woodlandgrove@poblliving.co.uk](mailto:woodlandgrove@poblliving.co.uk) | [www.poblliving.co.uk](http://www.poblliving.co.uk)

# The Apartments

1 Bedroom Homes

Living Area: 46.9m<sup>2</sup> | 505ft<sup>2</sup>



- **Apartments: 5, 8 & 11**
- **Apartments: 7, 10 & 13**
- **Apartments: 6, 9 & 12**

## ROOM DIMENSIONS

	<b>Kitchen/Living/Dining</b> 6.79m x 3.24m	22'3" x 10'8"
	<b>Bedroom</b> 3.17m* x 4.50m*	10'5" x 14'9"
	<b>Bathroom</b> 2.14m x 2.07m	7'0" x 6'9"
	<b>Kitchen/ Living/Dining</b> 7.32m x 3.21m	24'0" x 10'6"
	<b>Bedroom</b> 3.26m x 3.59m	10'8" x 11'9"
	<b>Bathroom</b> 2.04m x 2.13m	6'8" x 7'0"

Dimensions stated are within 50mm (2") but should not be used as a basis for furnishings, furniture or appliance spaces etc.  
 \*Dimensions listed are a maximum.  
 Please note the handing of plots may vary from the plans shown. Please check individual plot details with our sales team.