



CHARTIST
GARDEN VILLAGE



The Humberstone

4 Bedroom Detached House

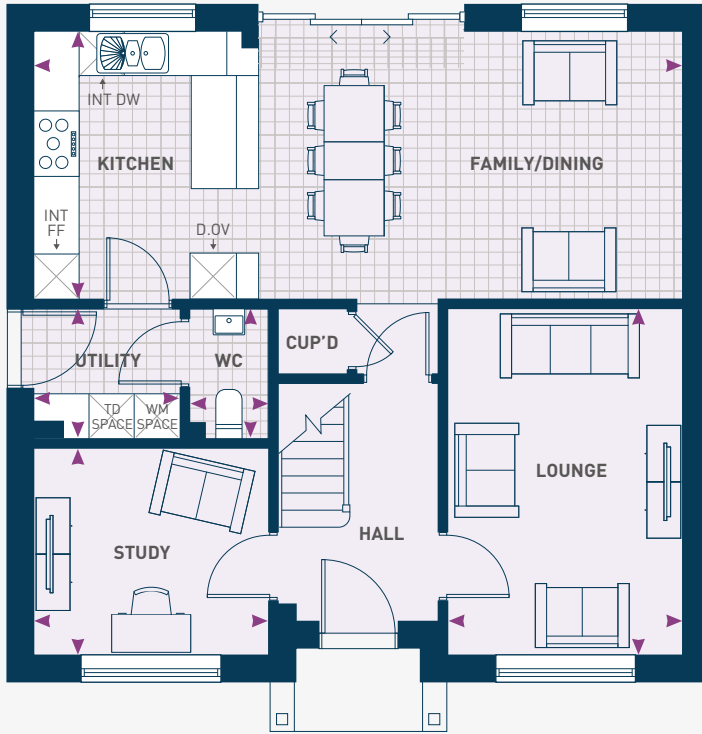
CGIs are indicative only and are subject to change, elevations may vary.

chartistgv@poblliving.co.uk | www.poblliving.co.uk

The Humberstone

4 Bedroom Detached House

Living Area: 142m² | 1,533 ft²



GROUND FLOOR

Kitchen/Family/Dining	8.67m x 3.60m	28'5" x 11'9"
Lounge	3.16m x 4.64m	10'4" x 15'2"
Study	3.16m x 2.81m	10'4" x 9'2"
Utility	1.98m x 1.76m	6'6" x 5'9"
WC	1.11m x 1.76m	3'7" x 5'9"



FIRST FLOOR

Master Bedroom	3.16m x 3.86m	10'4" x 12'8"
En-suite	2.33m* x 1.70m*	7'7" x 5'6"
Bedroom 2	3.16m x 3.55m	10'4" x 11'7"
En-suite	2.13m x 1.36m	6'11" x 4'5"
Bedroom 3	3.27m x 3.73m	10'8" x 12'2"
Bedroom 4	3.20m* x 3.25m*	10'6" x 10'8"
Bathroom	1.98m x 1.70m	6'6" x 5'6"

Dimensions stated are within 50mm (2") but should not be used as a basis for furnishings, furniture or appliance spaces etc. Please note the handing of plots may vary from the plans shown. Please check individual plot details with our sales team.

*Dimensions listed are maximum.