



CHARTIST
GARDEN VILLAGE



The Osborn

3 Bedroom Home

CGIs are indicative only and are subject to change, elevations may vary.

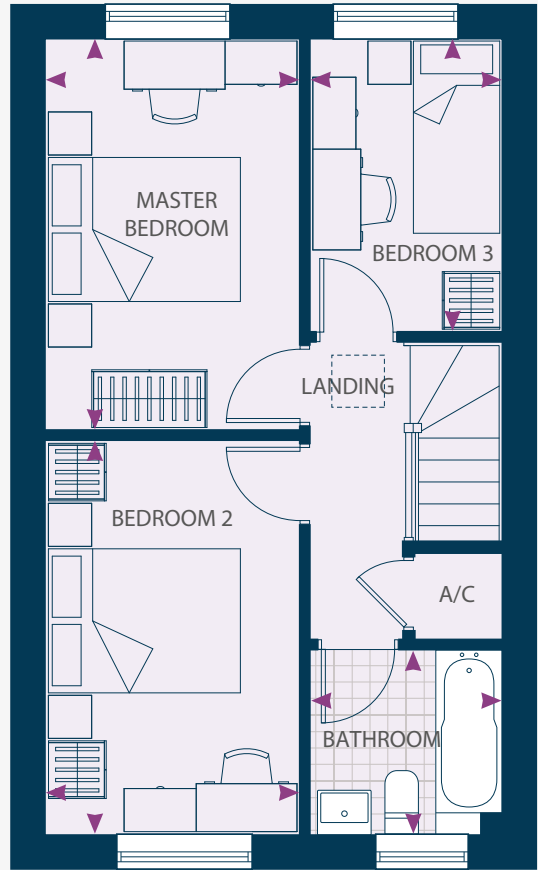
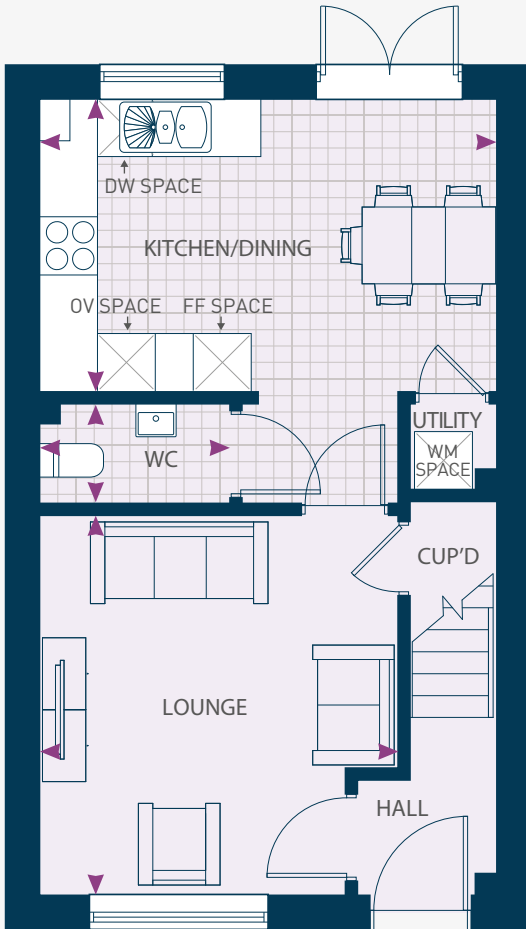
chartistgv@poblliving.co.uk

www.poblliving.co.uk

The Osborn

3 Bedroom Home

Living Area: 80m² | 861ft²



GROUND FLOOR

Lounge	3.80m* x 4.05m	12'5'' x 13'3''
Kitchen/Dining	4.80m x 3.09m	15'9'' x 10'1''
WC	2.03m x 1.08m	6'7'' x 3'6''

FIRST FLOOR

Master Bedroom	2.68m x 4.11m	8'9'' x 13'5''
Bedroom 2	2.68m x 4.16m	8'9'' x 13'7''
Bedroom 3	2.06m x 3.09m	6'9'' x 10'1''
Bathroom	2.06m x 1.96m	6'9'' x 6'5''

Dimensions stated are within 50mm (2") but should not be used as a basis for furnishings, furniture or appliance spaces etc. Please note the handing of plots may vary from the plans shown. Please check individual plot details with our sales team.

*Dimensions listed are maximum.