



**CHARTIST**  
GARDEN VILLAGE



# The Oakdale

3 Bedroom Detached Home

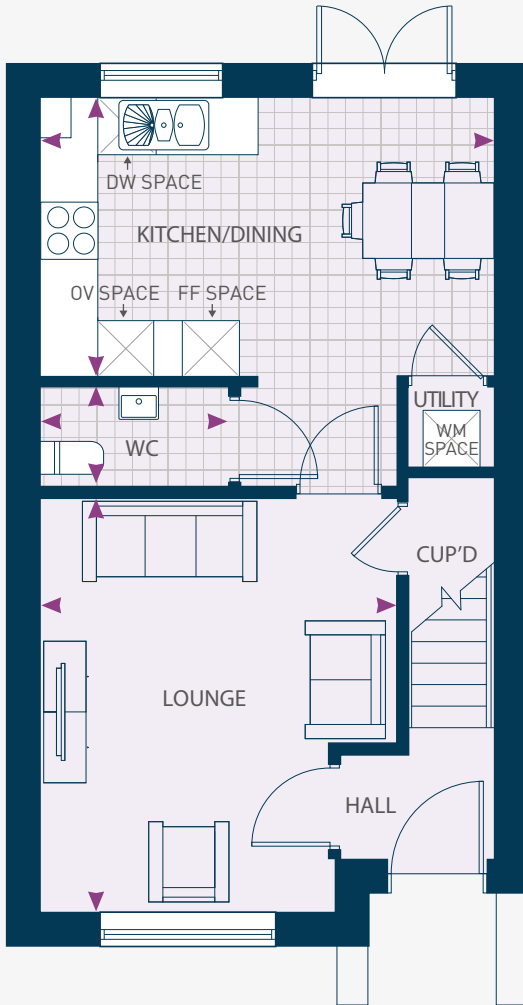
CGIs are indicative only and are subject to change, elevations may vary.

[chartistgv@poblliving.co.uk](mailto:chartistgv@poblliving.co.uk) | [www.poblliving.co.uk](http://www.poblliving.co.uk)

# The Oakdale

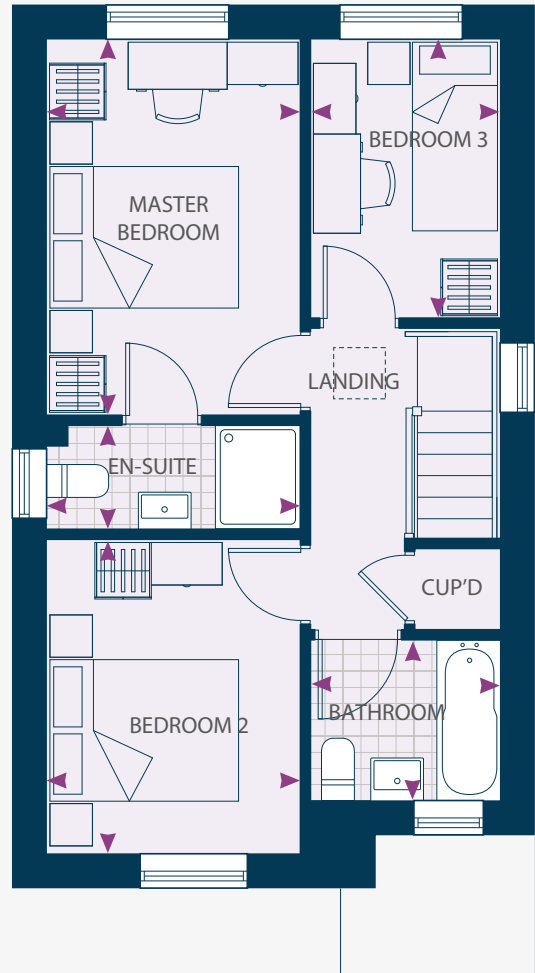
3 Bedroom Detached Home

Living Area: 82m<sup>2</sup> | 884ft<sup>2</sup>



## GROUND FLOOR

<b>Lounge</b>	3.86m* x 4.43m	12'8'' x 14'6''
<b>Kitchen/Dining</b>	2.99m x 4.85m	9'9'' x 15'10''
<b>WC</b>	2.04m x 1.08m	6'8'' x 3'6''



## FIRST FLOOR

<b>Master Bedroom</b>	2.72m x 4.04m	8'11'' x 13'3''
<b>En-suite</b>	2.72m x 1.13m	8'11'' x 3'8''
<b>Bedroom 2</b>	2.72m x 3.33m	8'11'' x 10'11''
<b>Bedroom 3</b>	2.06m x 2.99m	6'9'' x 9'9''
<b>Bathroom</b>	2.06m x 1.74m	6'9'' x 5'8''

Dimensions stated are within 50mm (2") but should not be used as a basis for furnishings, furniture or appliance spaces etc. Please note the handing of plots may vary from the plans shown. Please check individual plot details with our sales team.

\*Dimensions listed are maximum.