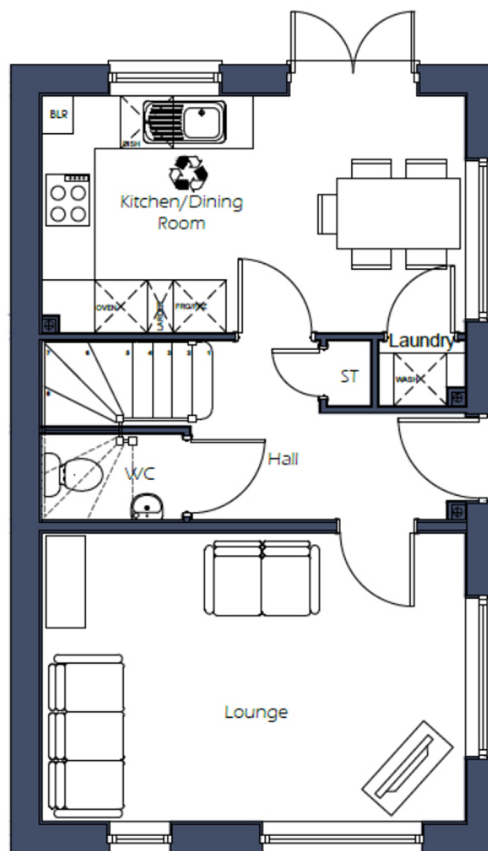


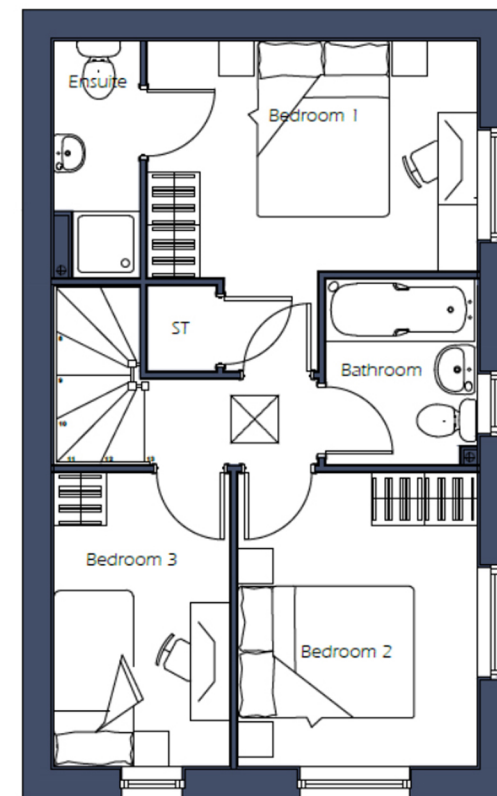
LETCWORTH

3 bedroom house



GROUND FLOOR

Kitchen Diner: 4.85 x 2.67m 15'10" x 8'9"
 Lounge: 4.85 x 3.26m 15'10" x 10'8"



FIRST FLOOR

Bedroom 1: 3.76 x 2.70m 12'3" x 8'10"
 Bedroom 2: 2.72 x 3.28m 8'11" x 10'9"
 Bedroom 3: 2.04 x 3.28m 6'8" x 10'9"
 Bathroom: 2.16 x 1.70m 7'0" x 5'7"

The images used are from an imaginary viewpoint within an open space area. External materials, finishes, landscaping, and external boundaries are subject to change and vary throughout the development. Properties may also be built handed (mirror image). Please enquire for further details. The floor plans depict a typical layout of this house type. For the exact plot specification, details of external and internal finishes, dimensions and floor plan differences, please consult our Sales Representative. All dimensions are + or - 2" and floor plans are not shown to scale.