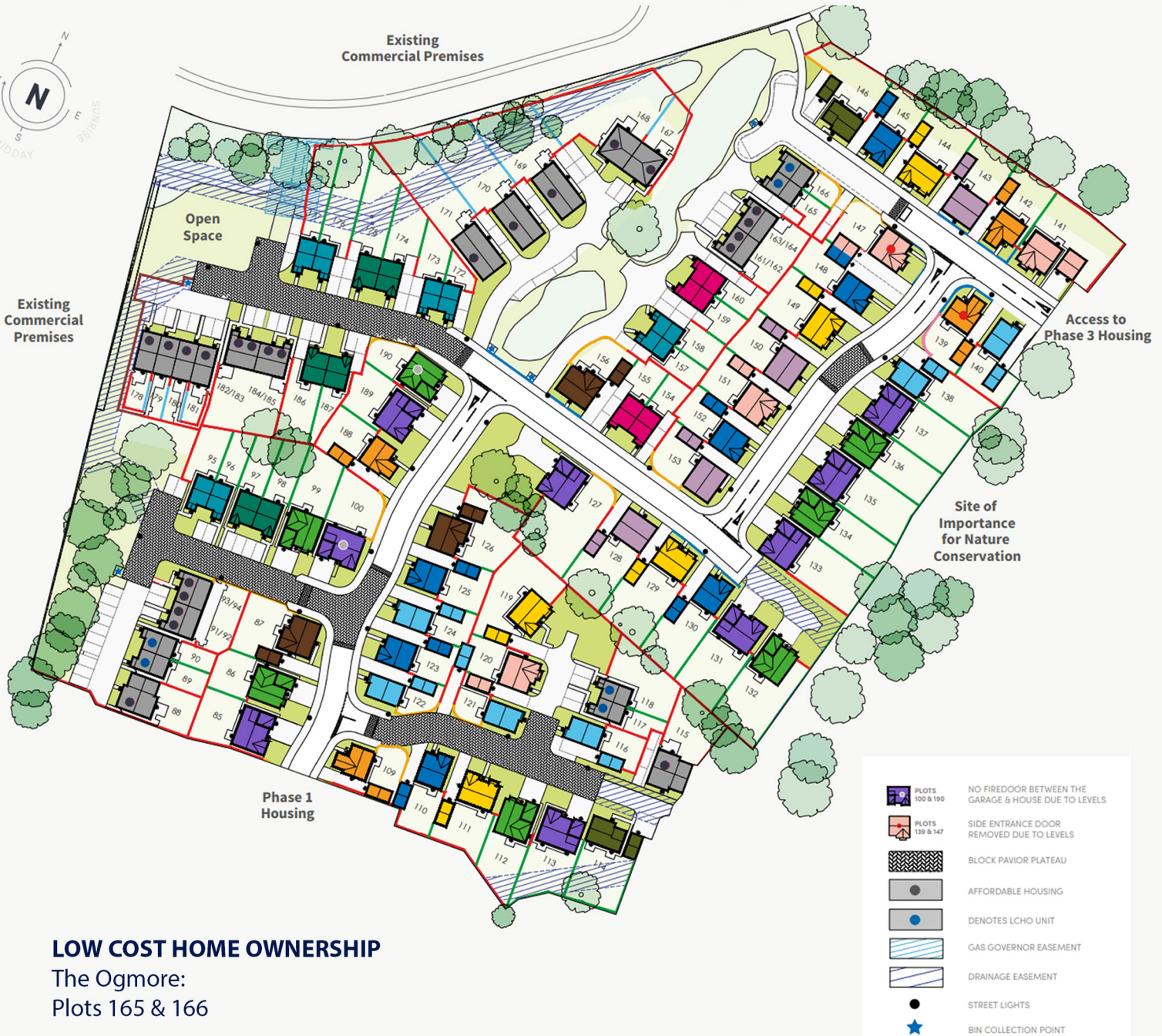


Hawtin Meadows

Pontllanfraith, Caerphilly, NP12 2EU

Llanmoor
Homes

poolliving



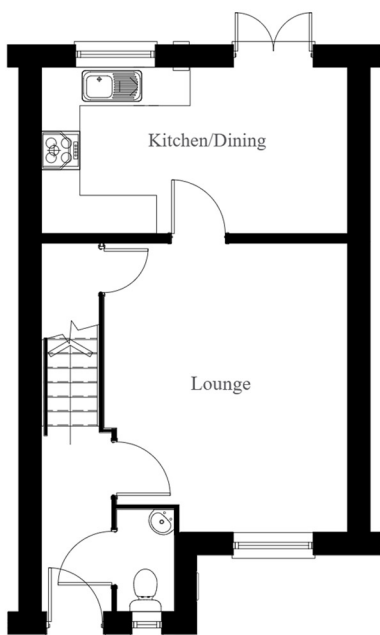
LOW COST HOME OWNERSHIP

The Ogmor:
Plots 165 & 166



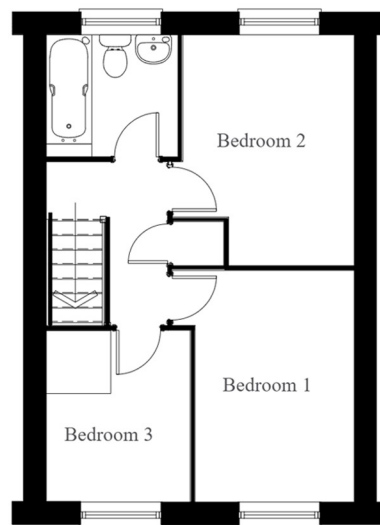
The Ogmore

3 bedroom semi-detached


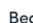
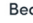



Ground Floor

-  Lounge
12' 4" x 14' 8"
-  Kitchen / Dining
15' 6" x 8' 4"
-  Cloaks
5' 3" x 3' 0"



First Floor

-  Bedroom 1
11' 8" x 8' 0"
-  Bedroom 2
11' 8" x 8' 7"
-  Bedroom 3
8' 8" x 7' 2"
-  Bathroom
6' 9" x 6' 6"

These particulars are for illustration only. We operate a policy of continuous product development and individual features such as windows, garages and elevational treatment may vary from time to time. Consequently these particulars should be treated as a general guidance only and cannot be relied upon accurately describing any of the Specified Matters prescribed by any Order made under the Property Misdescriptions Act 1991. Nor do they constitute a contract, part of any contract or a warranty.