

Mill Street

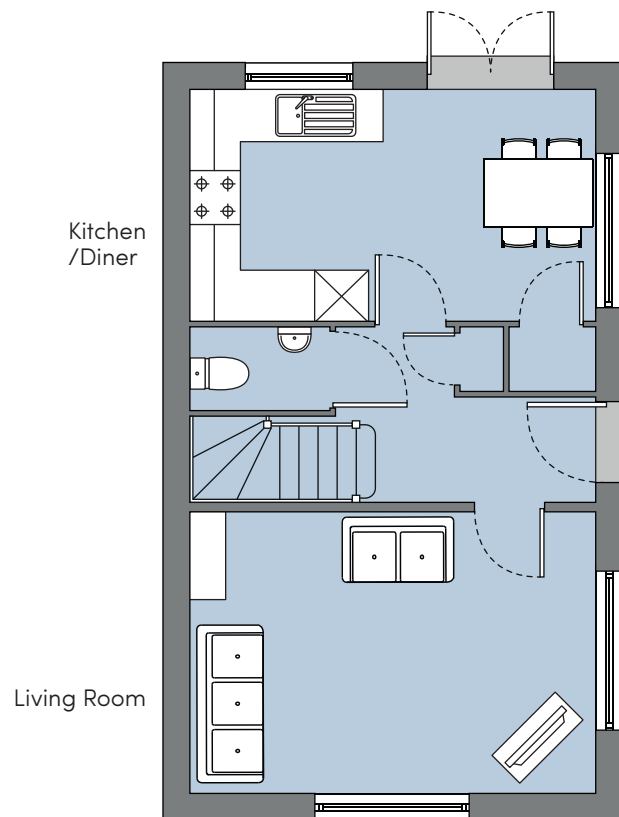
Risca

Letchworth
3 bedroom house



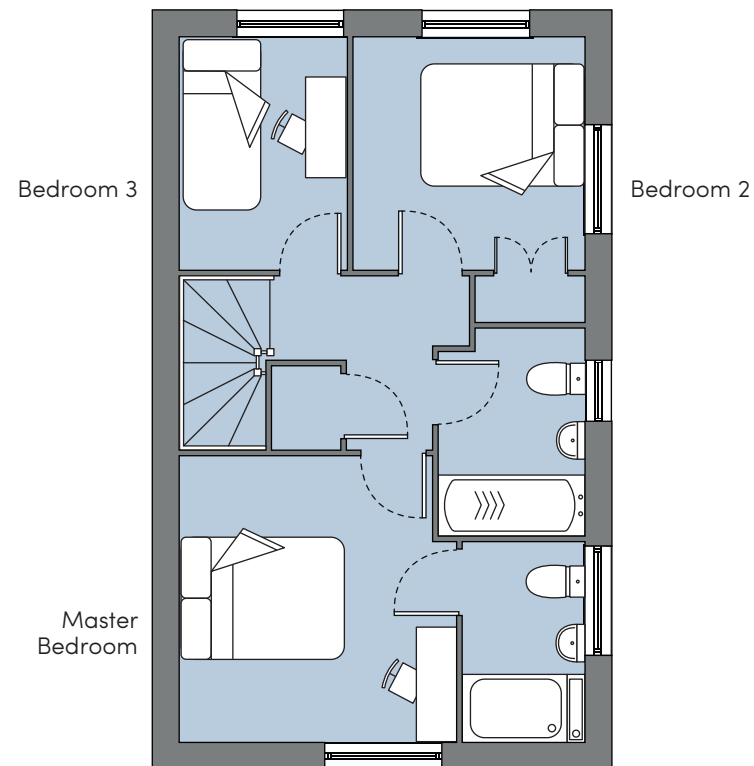
03333 312 324

www.poblliving.co.uk



Ground Floor

	L x W (ft-in)	
Lounge	15' 7"	10' 1"
Kitchen/Diner	15' 7"	9' 0"



First floor

	L x W (ft-in)	
Master Bedroom	10' 2"	10' 7"
Bedroom 2	8' 5"	9' 0"
Bedroom 3	6' 9"	9' 0"

The images used are from an imaginary viewpoint within an open space area. External materials, finishes, landscaping, and external boundaries are subject to change and vary throughout the development. Properties may also be built handed (mirror image). Please enquire for further details. The floor plans depict a typical layout of this house type. For the exact plot specification, details of external and internal finishes, dimensions and floor plan differences, please consult our Sales Representative. All dimensions are + or - 2" and floor plans are not shown to scale.